

Venture is designed to help match farmers and landowners who are looking to step back from the industry with new entrants looking for a way into farming. It guides people on both sides through the key steps required to find a potential business partner. An integrated package of training, mentoring, specialist advice and business support equips participants with the skills, knowledge and confidence needed to help them achieve their goals.



## RAG Score

■ Red ■ Amber ■ Green

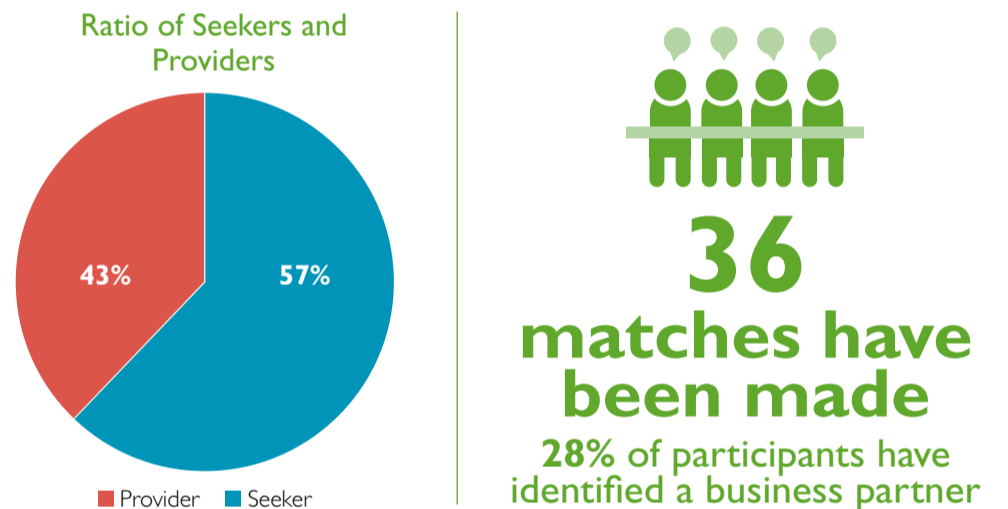
**Green** Project and events are on target



Some of the opportunities currently being offered. Seekers need to register with Venture and complete a profile to gain access to full Provider profiles.

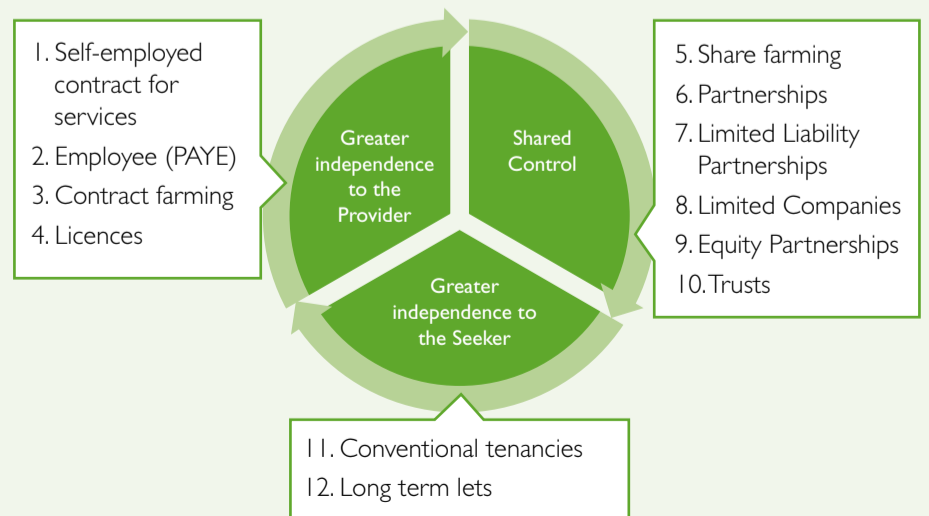
Location	Size of Holding (hectares)	Sector	Venture Reference Number
Ammanford	27	Sheep	84
Welshpool	152	Beef & Sheep	222
Cardiff	2-120	Sheep	259
Newcastle Emlyn	68	Dairy (formerly)	290
Newtown	102	Beef & Sheep	229
Llandysul	92	Sheep	126
Carmarthen	40	Sheep	105
Carmarthen	36	Beef & Sheep	244
Llanfyllin	29	Forestry	220
Carmarthen	185	Dairy	121
Haverfordwest	70	Beef & Sheep	112
Haverfordwest	24	Horticulture	87
Abergele	100	Beef & Sheep	189

Venture opportunities were sent out to 60 Seekers at the end of November. 8 expressions of interest for more information were received. We are still seeing limited numbers of new entrants coming forward to find out more about the opportunities offered.

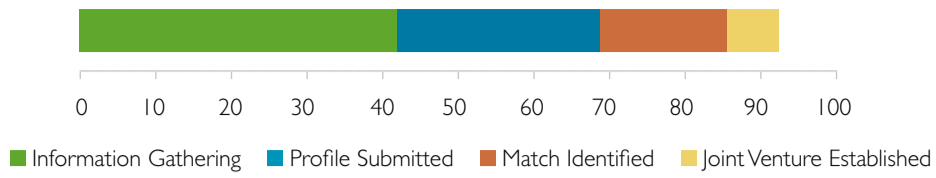


Their next step will be to apply for the Farming Connect Advisory Service which provides up to €3000 of fully funded advice to agree on a business structure and form a plan for their new group enterprise.

Our **Venture Handbook** provides an overview of the spectrum of Joint Venture business models that can be considered.



### Status



Are you looking for a route into farming? Or could you provide an opportunity for a new entrant? Click [here](#) to find out more.

### Venture Workshops

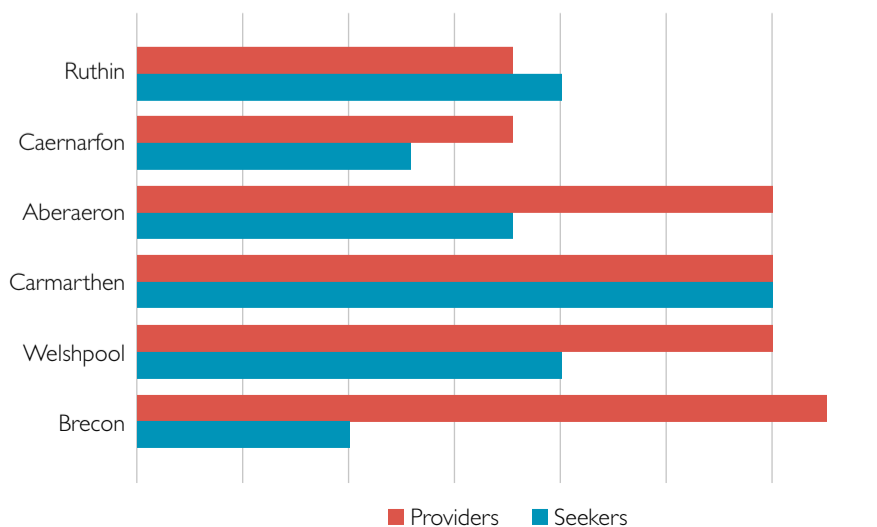
A series of six regional workshops were held during this period with the aim to bring together landowners and farmers wanting to exit the farming industry or scale back with those trying to gain that all-important first foothold or wishing to explore share farming or joint venture opportunities. The workshops focused on helping attendees to take stock of their assets and skills and help them identify any particular challenges or opportunities. Expert speakers also explained how Venture can help find the right match, by identifying the optimum combination of land, people, skills and shared objectives which must be the foundation of all joint ventures.

On average, there were more Providers than Seekers in attendance.

Location	Attendees	Seekers (Couples counted as 1)	Providers (Couples counted as 1)
Brecon	27	4	13
Welshpool	28	8	12
Carmarthen	30	12	12
Aberaeron	31	7	12
Caernarfon	19	5	7
Ruthin	18	8	7



### Venture Networking Workshops September/October 2017



### Land Matching Conference, Chatsworth House, 8th-9th November

Einir Davies, Farming Connect Development and Mentoring Manager and Gwen Davies, Farming Connect Development and Mentoring Co-ordinator attended a conference and met with representatives from England and Northern Ireland who are delivering similar programmes. Some valuable knowledge was exchanged and it was interesting to find that similar barriers were being faced.

### Royal Welsh Winter Fair, Llanelwedd, 27th-28th November

We welcomed Lesley Griffiths, Cabinet Secretary for Energy, Planning and Rural Affairs, key stakeholders and industry representatives to celebrate the outcomes achieved by Venture since its launch 2 years ago. It was also an opportunity to share some of the barriers and call on stakeholders to support us further in promoting the opportunities offered.



Professor Wynne Jones, Rhys Richards, Lesley Griffiths AM and Einir Davies, Farming Connect Development and Mentoring Manager

### Case Study



Click [here](#) to learn more about Rhys Richards' joint venture experience.



The above video was prepared for the winter fair and other marketing purposes.

### Some highlights from our online and social media platforms:

#### Facebook 20/09/2017

*"It is so difficult to get a foothold in farming, I'm really grateful of this opportunity."* Rhys Richards #thelatest

Follow the link to book your place on our 'Venture' workshops where you'll discover more about the joint venture process!

People Reached – **13222**

Likes, Comments & Shares – **296**

#### Facebook 13/10/2017

Our series of Venture Workshops came to a close this week with about 160 people attending the 6 pan-Wales events in total. In general, we saw many more people who could provide opportunities than those looking for a route into the industry. Contact us if you are interested in the programme!

Thank you to Alison Ricket from the Fresh Start Land Enterprise Centre and Manon Tomos from Agri Advisor for joining us and for leading the workshops.

People Reached – **6488**

Likes, Comments & Shares – **16**

