



Number of businesses registered:
11,094

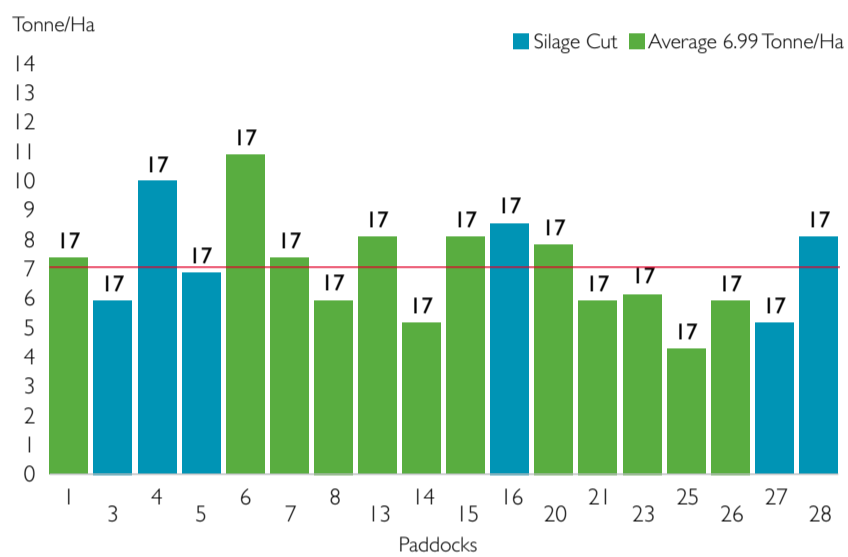


Number of individuals registered:
23,053

Demonstration Network

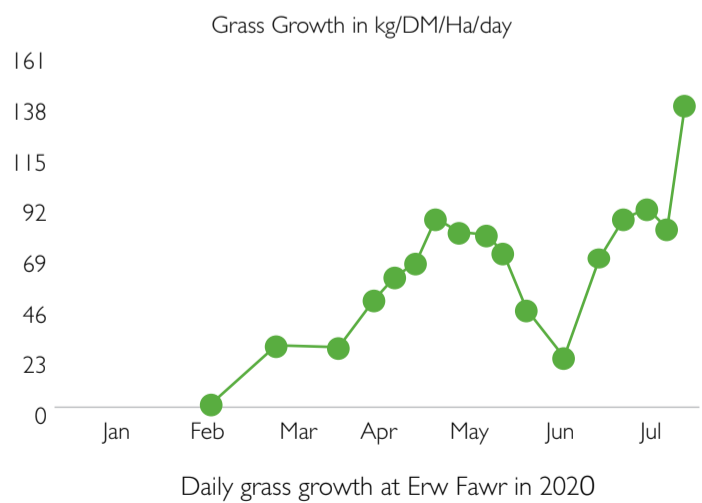
Grass monitoring at Erw Fawr demonstration site

Monitoring grass growth and productivity is essential for the success of a livestock business and during the challenging conditions of spring 2020, it has really shown its worth. The graph below shows the amount of grass produced in some of the fields across the farm.



Careful weekly measuring of grass not only allows short term decisions to be made on the grazing rotation, it also identifies which fields and paddocks perform throughout the growing season. At Erw Fawr, the difference in total growth (tDM/ha) between the best and worst performing field is just over 5 tonnes of dry matter. Increasing the total average of grass grown/ha will allow either a higher grazing stocking rate (LSU) or more quality forage to be ensiled thus reducing purchased feed. At the end of the year, this data can be set alongside a nutrient management plan to target remedial soil activities or to devise a new re-seeding policy and any impact these might have on grass growth can be easily reviewed.

Information from collecting grass measurement data can also help with management decisions as shown below in the graph.



Like many farms during May and June, grass growth at Erw Fawr was suppressed by low soil moisture conditions that would be more familiar in late July and August. Despite its favourable grass growing location on the western edge of Anglesey, the growth rate dropped to only 23kgDM/ha/day during a period where 90-100kgDM would be the norm. This meant activities such as drying cows off early, increasing concentrate in the parlour and buffering with silage were utilised to help slow the rotation down.

Rearing dairy heifers at Llys Dinmael



Heifers grazing at Llys Dinmael 21 June 2020

Llys Dinmael is an upland farm but with good capacity for producing grass and with this in mind, this sheep farm has diversified into dairy heifer rearing to utilise their grass management skills. The heifers are weighed monthly to check that target weights are being achieved and in spring 2020 the decision was made to bull them earlier than originally planned, at the target weight of 370kg. This was made possible by the cattle being ahead of their target growth rates. The business decision behind this change of plan is an expectation that there will be demand for heifers in spring 2021 following a challenging year that has seen additional stock culled to reduce farm costs.

Breeding the heifers began in late May with heats being observed naturally and without the use of detection aids. While this has proved successful, it has also been noted that synchronisation could aid management and result in a tighter batch that will calve at the same time.

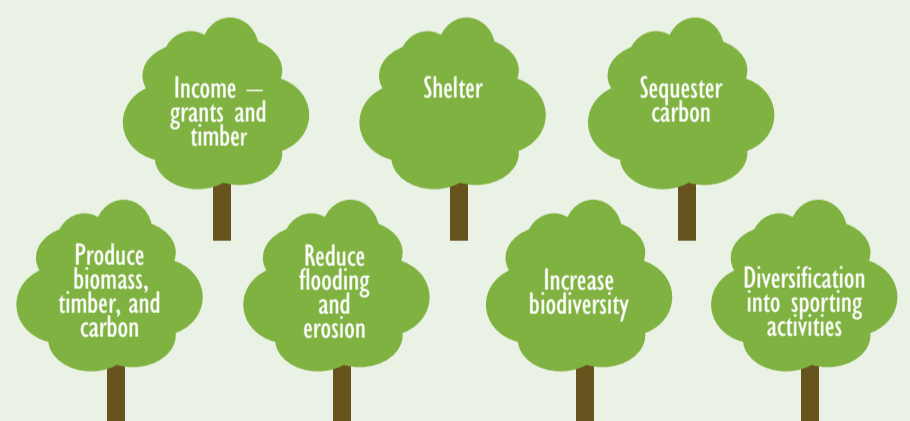
Llys Dinmael have benefited from:

- setting weight targets and regularly monitoring cattle,
- measuring grass on a weekly basis to ensure a continuous supply of grass.

These two factors have enabled the business to adapt to the market situation because they knew exactly how the cattle were performing.

The benefits of tree planting to the farm business – webinar delivered by Iwan Parry, Tilhill Forestry

Woodlands can bring many benefits to the farm business including:



Support available through Glastir Woodland Creation:

Woodland Category	Grant (£ hectare)		Fencing £/M
	Year 0	Year 1-12	
Enhanced Mixed Woodland	£3,600	£60	
Native Woodland – Carbon	£4,500	£60	
Native Woodland – Biodiversity	£3,000	£60	£3.48
Agroforestry – Scattered	£1,600	£30	
Woodland Creation Premium		£350	

Farming Connect promotes GWG through a number of services including webinars, podcasts, clinics and the advisory service.

Further information can be found on [here](#).



Case Study

Tynyberth Demonstration Site

A Farming Connect technical officer worked with the landowner at Tynyberth to provide advice on new planting, specifically the woodland carbon code.

- 48ha of enhanced mixed woodland
- Planting – 50% Sitka Spruce, 15% Douglas Fir, 10% Norway Spruce, 15% Birch and 10% Alder
- Conifer planted @ 2,700 trees/ha (grant requirement is 2500 trees/ha)
- Mixed broad leaves planted @ 2,500 trees/ha
- Ground preparation – ploughing, mounding, direct planting
- Fencing – 2,200m of new fencing
- Capital grant – from the Glastir Woodland Creation Scheme – £180,000 to establish the woodland (covered the cost of all the work and materials)
- Annual payment of £19,680 for 12 years



Images above show before and after woodland planting

EIP

5
APPROVED BUSINESS
THEMED PROJECTS

working
with

24
FARMERS AND
FORESTERS



Introducing fat-tailed sheep to Wales to satisfy UK market demand

This EIP project will be the first of its kind to introduce the Damara, which is a breed of fat-tail sheep that is sought after by some ethnic communities, to the UK market place and aims for Wales to be pioneering in the development of this breed of sheep. This three-year project, involving two farmers from North Wales, aims to investigate the feasibility of rearing both pure Damara and cross breeding them with Romney, Texel cross, and Lleyr cross ewes and monitor how well they adapt to typical milder and wetter Welsh conditions.

Following embryo transfer and artificial insemination, 50 ewes were successfully impregnated and in spring 2020 the lambs were born. The progeny are thriving and ongoing monitoring will assess how well they perform. The farmers will aim to steadily increase numbers and then be in a position to investigate market outlets both directly and through wholesale buyers.

Click [here](#) to see the first Damara lambs born in Wales.

Knowledge Exchange Hub

Technical articles published:

- LAMB PRODUCTION AND WALES: A HOLISTIC ENVIRONMENTAL FOOTPRINT
- DROUGHT RESISTANT CROPS FOR THE FUTURE
- MORE MILK FROM MORE FORAGE
- ADDING VALUE TO COW'S MILK
- FACTORS AFFECTING SHEEP FLOCK PRODUCTIVITY
- THE USE OF WOOL IN COMPOST AND OTHER ALTERNATIVE APPLICATIONS

Advisory Service

Number of business who have received support through the Business Categories of the Advisory Service during this period:



64 individuals received one-to-one support through the Business Categories of the Advisory Service during this period.

Feedback from businesses on delivery of this Advisory service:

"Gave me a better understanding of the enterprise gross margins and the profit required by the business."

"A well constructed business plan and budget created for our business."

"Very helpful advice which will help our business in future."

Discussion Groups



A North Wales beef discussion group invited Nerys Llywelyn Jones from Agri Advisors Legal LLP to speak to the group on a variety of matters, from succession to tenancy rights at their digital meeting.

Nerys highlighted the importance of forward planning for every business and the importance of having a long-term plan. Succession should be considered as early on as possible, so that the business can work towards their long-term aim.

Agricultural dwelling tax was discussed, with a warning of possible pitfalls.

One group member had an issue with having notice of a long-term tenancy coming to an end before its stipulated time. Nerys was able to explain the tenant's rights and where they stood in terms of a termination of agreement. This will enable the tenant to approach the landlord's agent with more confidence in their rights as sitting tenants.

Farming Connect's support for both succession and tenancy issues was explored, and what was on offer should any member need a one-to-one digital surgery with Nerys.

Mentoring Programme

514 TOTAL MENTEEES MENTORED **23** NEW MENTEEES DURING THIS PERIOD

The most popular topics applied for during this period were:

BEEKEEPING



PERSONAL DEVELOPMENT



HEALTH AND SAFETY

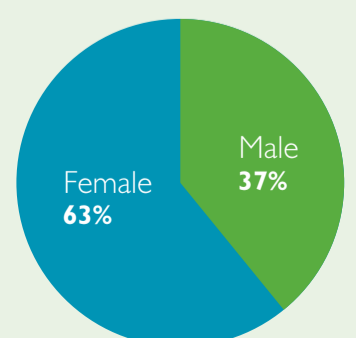


Key characteristics of top third businesses – 09/06/2020

In this webinar, Johnathon Crimes, an agricultural consultant with CARA Wales, discussed how the top third of farm businesses are performing, focusing particularly on the financial and technical aspects of these businesses. The discussion gave the listeners an opportunity to directly compare their business performance with the top third. 81 unique viewers were present at this webinar.

Click [here](#) to watch.

The piechart shows the gender split of the viewers of this webinar



Personal Development Plan

135 PERSONAL DEVELOPMENT PLANS WERE CREATED DURING THIS PERIOD



Agrisgôp

Working together within a group, Agrisgôp members can learn new management skills, access specialist information and explore and develop viable futures for themselves, their families and their businesses.

21 ACTIVE GROUPS with **220** MEMBERS attending a total of **46** MEETINGS DURING THIS PERIOD

Plant health

Financial support

Branding and marketing

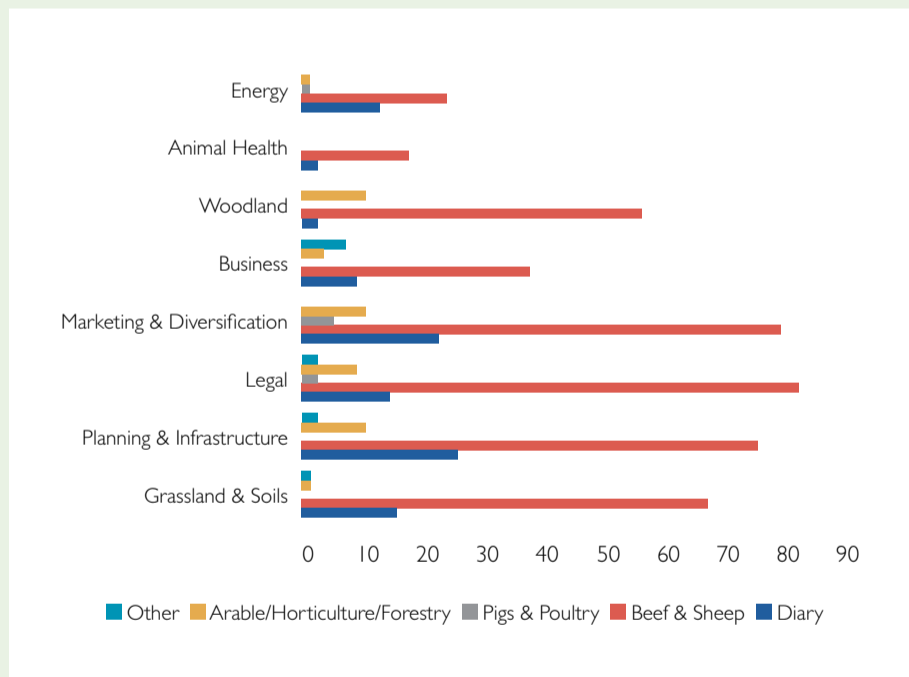
Milk vending machines

Managing data

Surgeries

82 SURGERIES HELD with **555** ATTENDEES

This is a table showing businesses' main sector that attended each surgery.



Feedback from beneficiaries:

"Gave us the tools we need to think about in the process of changing our business structure."

"This surgery has shown us how important succession is and that it is very important to prepare your business well in advance."

"We got a lot of information and tips for us to improve the performance of our flock for the next lambing season."

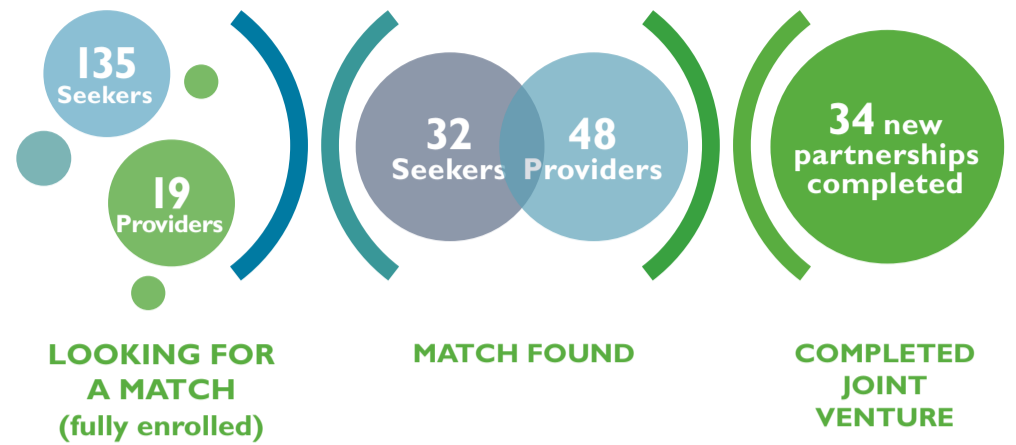
"The staff management surgery taught us how to treat our farm as a commercial business and gave us lots of tips on how to deal with workers on the farm."

Venture

604 EXPRESSIONS OF INTEREST SUBMITTED SINCE THE START OF VENTURE



235 ACTIVE PARTICIPANTS



46,793 ACRES OF LAND INVOLVED



E-learning

Some of the e-learning courses completed within this period include:

COLLABORATIVE AND SHARE FARMING



FARM BENCHMARKING



PLANNING AND FINANCE



VAT



Click [here](#) to visit the website.

Training Courses

Course Name	Number of individuals trained during this period
Emergency First Aid at Work	14
Business Planning and Development	7
Marketing Your Business	5
Managing Casual and Seasonal Teams	5
Leading & Managing	4

ICT Programme

LEVEL 1

6-week training course =

0

individuals trained

LEVEL 2

One-to-one tutoring =

45

individuals trained

LEVEL 3

Workshops =

91

attendees

Workshop themes included:

- Creating a website
- An introduction to drones and their benefits
- An introduction to drones and their benefits
- Keep better records and make better decisions with Agriwebb.