

# POULTRY DASHBOARD

October 2020 – September 2021

% of activity relevant to the Poultry sector:

**38%** POULTRY ACTIVITY **399** OF BUSINESSES REGISTERED WITH FARMING CONNECT ARE FROM THE POULTRY SECTOR



## Demonstration Network

### Wern: Drying out chicken litter with non-infective bacteria

Adding non-infective bacteria to the environment of poultry sheds to dry out litter and reduce ammonia levels has the potential to help farms meet the challenges of new Control of Agricultural Pollution regulations, a trial at Wern, Welshpool has shown.

Osian Williams, who farms at Wern, the only Farming Connect poultry demonstration site in Wales has been trialling a new approach to optimising the environment in his two 16,000-hen multi-tiered sheds.

This has resulted in reduction in the frequency that muck needs to be cleaned from the manure belts, from every three days to once a fortnight, and hens are dealing with red mite challenges naturally by maintaining high health.

Mortality rate has decreased, from 3.7% to 2.7% in comparison to the same week with the previous flock. Based on benchmarking similar systems, this low mortality is in the top 1% of producers. Osian has also seen no requirement for the use of antibiotics.

The objective of the trial is to determine what variations optimised the environment of housing. By introducing non-infective bacteria similar to soil, in the form of Pruex stabiliser, into the shed, water vapour is produced and the litter dries out. This effect is apparent at Wern from a significant reduction in the build-up of muck on manure belt and the business is able to hold chicken muck on the belts for two weeks rather than three days. Before the trial, the litter had been 70% moisture and the weight of this on the manure belt meant it needed to be cleared frequently.

Over the duration of the project, Pruex have been able to reduce moisture in the litter on the belts by over 50% of the original levels. This has also reduced labour requirement by more than three quarters and ammonia levels are low and have reduced by 75% in the warmer summer months, from 20 parts per million to 5.

## Knowledge Exchange Hub

The following technical articles have been produced by the KE Hub:

-  GREENHOUSE GAS EMISSIONS AND ENVIRONMENTAL IMPACTS OF THE POULTRY INDUSTRY: PART 1
-  GREENHOUSE GAS EMISSIONS AND ENVIRONMENTAL IMPACTS OF THE POULTRY INDUSTRY: PART 2
-  AIR POLLUTION: THE ROLE OF AGRICULTURE IN WALES
-  AIR POLLUTION: REDUCING AMMONIA EMISSIONS BY ADAPTING LIVESTOCK MANAGEMENT APPROACHES

## Agrisgôp



**19** MEETINGS HAVE BEEN RELATED TO THE POULTRY SECTOR

Key topics included:

Diversifying into Poultry 	Reducing Ammonia Levels 
New Technology 	Water and Manure Storage Regulation 

## Discussion Groups



**14** POULTRY DISCUSSION GROUP MEETINGS

held with



**138** ATTENDEES

Two poultry discussion groups, one from Mid Wales and the other from North Wales were given the opportunity to benchmark the physical and financial poultry enterprises with Jason Gittins, Technical Director of Livestock at RSK ADAS.

Following data collation, a meeting was held to discuss and evaluate the findings. Details were discussed openly so that group members gained full understanding of others' results and the kind of figures to aim for.

The data collected included:

- Background information
- Date of housing (month and year)
- Housing type (flat deck or multi-tier)
- Flock size
- Breed
- Flock age at housing (weeks)

### Flock performance

Egg number per bird to 76 weeks (or to time of depopulation if less than 76 weeks) based on the number of pullets housed

Age of depopulation (weeks)

Egg number per bird to the time of depopulation (if more than 76 weeks)

Average egg weight (grams)

Egg mass per hen housed (kg)

Percentage seconds – farm and packing centre (%)

Flock mortality to 76 weeks (or to time of depopulation if less than 76 weeks)

Final flock mortality (if more than 76 weeks)

Feed intake based on the number of birds housed (grams per bird per day)

### Financials

Pullet price (£ per bird)

Feed price (£ per tonne on a 'weighted' basis for the flock if different feeds are used and/or feed price has varied)

Average egg price, all eggs including seconds (pence per dozen)

End-of-lay hen price (pence per bird)

Ranges were discussed and why certain businesses were performing better. Peer advice was offered by group members, as well as suggestions from Jason on how some aspects could be improved. It was an excellent meeting with full interaction by all members present.

## Strategic Awareness Events

**33** Events held

Key topics included:

Managing your poultry manure 	Poultry Water Resources Regulations 
Innovation and diversification: Selling online 	Lion training passport: What are the new requirements? 

\*Strategic Awareness Event themes are often cross-sectoral that tend to attract farmers from all sectors.

## Surgeries

**64** SURGERIES HELD



Key topics included:



Many poultry farmers have had infrastructure advice during this period to discuss implications of the new Control of Agricultural Pollution regulations will have on their business.

## Mentoring

We have **4 Poultry Mentors** on the framework



Click here for **Helen's profile**



Click here for **Malcolm's profile**



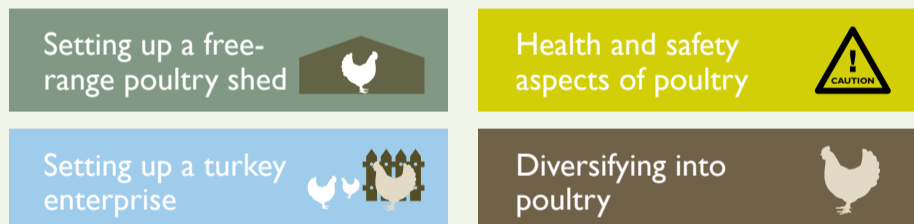
Click here for **Mark's profile**



Click here for **Sian's profile**

**4%** OF MENTEES ARE BEING MENTORED ON POULTRY ISSUES (MANY INCLUDE NEW ENTRANTS TO POULTRY)

Topics discussed:



## Training

There have been five application windows between October 2020 and September 2021 (excluding reapplications for Covid) with **866** instances of training delivered during this period.

Of this number, **61** instances were from the Poultry sector:

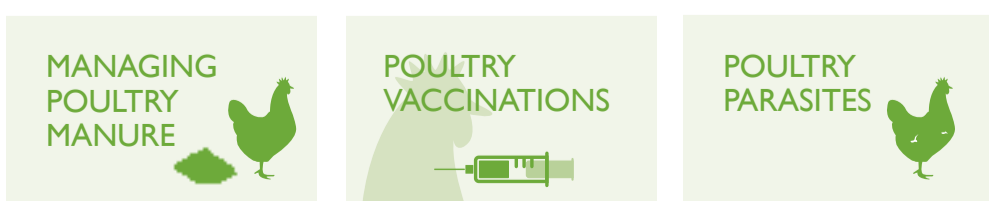
### Courses

**Poultry Welfare (Poultry Passport), Hygiene and Bio security (Poultry Passport), Lion Training Passport: Biosecurity, Security and Egg Handling, Preparing for IPPC Regulations (Poultry Industry)**



## E-learning

**750** e-learning modules were completed during this period relating to the Poultry sector:



For more information on e-learning, please visit the [website](#).

## EIP Wales

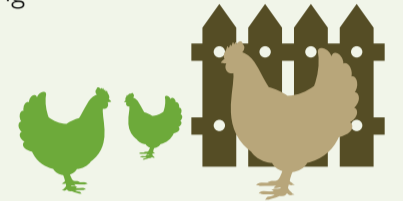


### Reducing ammonia emissions from broiler chicken production

Ammonia is an inevitable consequence of poultry farming, produced as the poultry manure breaks down. However, it has significant effects on the environment and air quality, as well as affecting bird welfare and the economics of the enterprise. New planning applications for poultry operations are often turned down because of the risks from high ammonia levels demonstrating the need for the industry to address this problem and seek ways to reduce emissions.

Emissions can be reduced by incorporating expensive mechanical scrubbers to strip the ammonia from the air. This EIP Wales project is investigating ammonia-reducing additives that are available on the market to see whether they form a viable alternative. The additives are either applied directly to the litter or supplied via drinking water. Each farm will assess the additives to see the impacts on:

- ammonia levels within the poultry house
- foot pad condition, hock and gait scoring
- feather condition
- litter condition
- bird mortality
- feed intake and liveweights



At the end of the project, the group will be able to assess the effectiveness of the additives in terms of their ability to reduce ammonia and the costs involved.

## Webinars

Examples of webinars held include:

### Managing your poultry manure

Farmers and representatives from NRW held detailed discussions, raising the current challenges and opportunities they each faced within the poultry industry.

The key topics discussed in this webinar were: phosphate in water courses, ammonia targets, and best practice techniques to reduce ammonia.

Presenter Graham Leaver also touched on range management, manure values and manure storage, and techniques to avoid run off, as the new Control of Agricultural Pollution regulations were being considered.

### Lion Training Passport

Farming Connect were joined by Leroy Burrell, Poultec Training Limited for a webinar about the new Lion Training Passport. During this webinar, the following topics were discussed:

- What are the new requirements?
- How to comply?
- Where can we find more information?

### Poultry Water Resources Regulations

Earlier this year, changes were announced regarding the regulatory measures to address agricultural pollution. These changes apply to all farms across Wales. This webinar provided information on how these changes would affect businesses, and informed them of the requirements.

