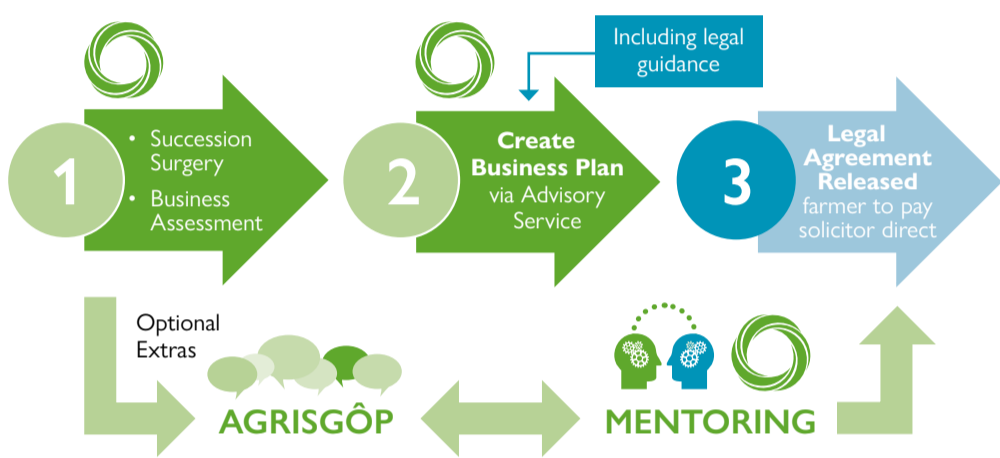


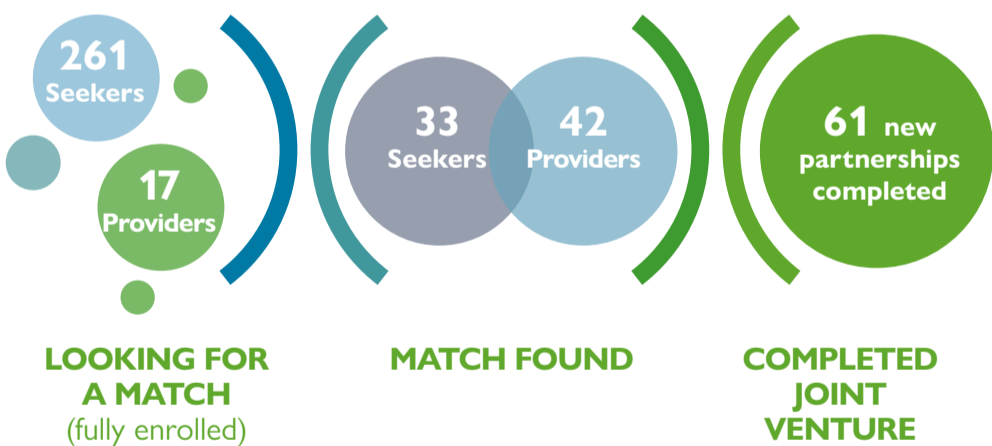
Venture is designed to help match farmers and landowners who are looking to step back from the industry with new entrants looking for a way into farming. It guides people on both sides through the key steps required to find a potential business partner. An integrated package of training, mentoring, specialist advice and business support equips participants with the skills, knowledge and confidence needed to help them achieve their goals.

The key steps in the **Venture journey** could include...



887 EXPRESSIONS OF INTEREST SUBMITTED SINCE THE START OF VENTURE

352 ACTIVE PARTICIPANTS



52,297 ACRES OF LAND INVOLVED

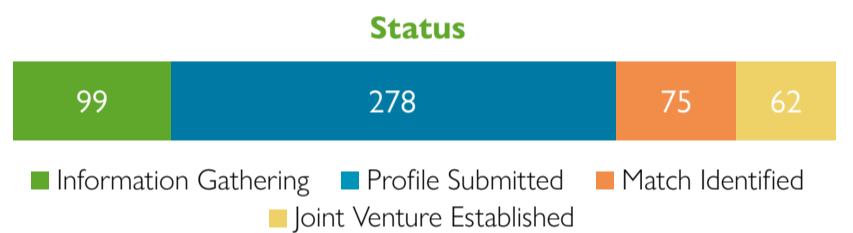
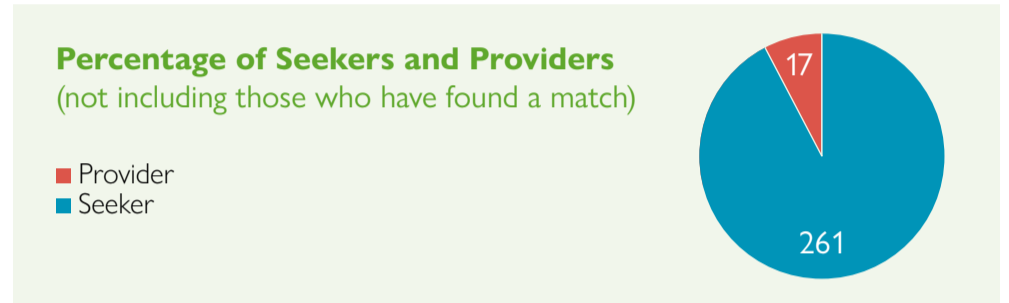


* Active participants refer to those who have fully enrolled by completing a Venture profile or are currently receiving business planning advice to establish a joint venture.

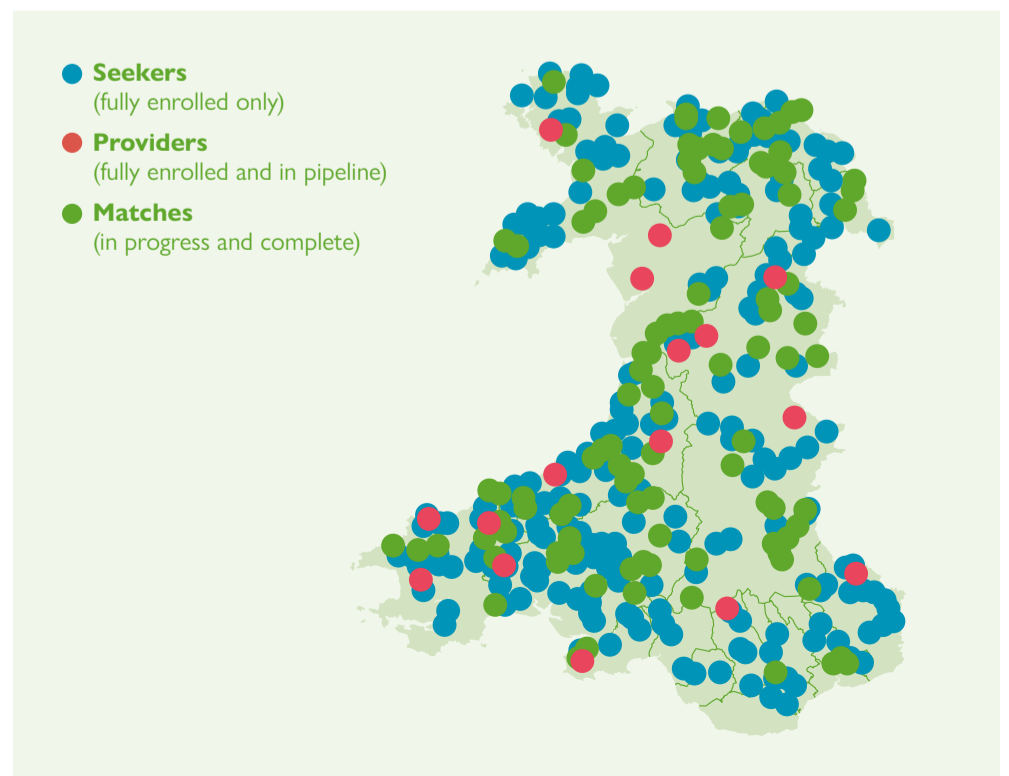
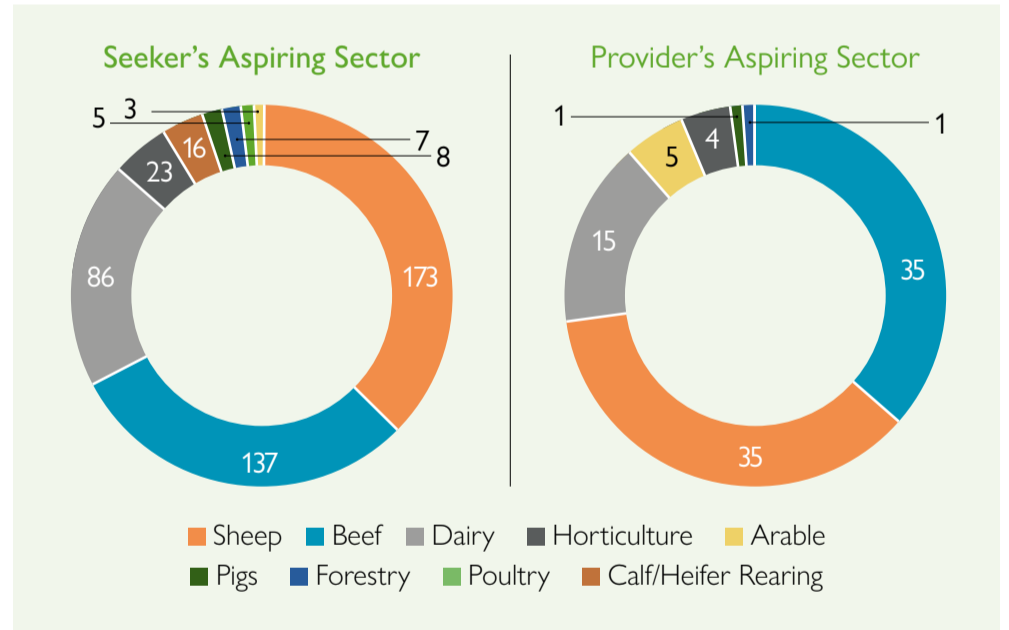
* Acres of land involved included land area of all Providers enrolled in the Venture programme, including land being advertised, land which has a potential Seeker assigned to it, land which is involved in a completed joint venture and the land of those who are in the early stages of the process.

* Providers offering an opportunity refer to landowners who are currently publicly advertising their opportunity.

* Those who have found a match includes those developing a new joint venture with a potential business partner and also those who have completed the process and established a new joint venture.



Sectors (active participants only)



WANTED!

Keen, capable and competent farmer, committed to sustainable farming, for a share-farming opportunity in West Wales



Angela and David Colledge.

The Venture team is currently seeking a keen, capable and competent farmer who will provide the appropriate match – a business partner with the right combination of skills, knowledge and ambition.

The owners of what is today a 575-acre organic farm on the Pembrokeshire/Carmarthenshire border, which has a herd of over 70 Simmental suckler cattle plus followers, wish to focus on their flourishing holiday letting business. Could you be the individual they are hoping will come forward?

David Colledge, an accountant, and his wife Angela – now the farmer – left north London to move to Gwarmacwydd, near Clynderwen, in 1985. They bought the historic stone-built house with numerous traditional stone outbuildings, starting out with 106 acres of poorly fenced lowland and purchasing 50 Friesian dairy cows.

“We are past the usual retirement age, but still active and with the tourism enterprise increasingly taking up more of our time, we feel there is scope to work collaboratively with an energetic and focused new business partner, to maximise the potential of the farm.”

“As a family we each feel ready to take a step back from day-to-day farming and to achieve that, we need new blood, and a fresh perspective from someone who is as committed as we are to not only organic farming but sustainable, self-sufficient farming.”



Total insights on social media promoting this opportunity included:

POST IMPRESSIONS

15,673

POST REACH

14,964

POST ENGAGEMENT

924

As a result of a video produced promoting this opportunity Total Insights included:

POST IMPRESSIONS

9,156

POST REACH

4,560

POST ENGAGEMENT

397

Opportunity #776

North Pembrokeshire
263 ha / 650 acres
2000 Sheep
Possible accommodation



Opportunity #761

Newtown
70 ha
60 Welsh mule ewes
No accommodation



Opportunity #785

North Monmouthshire
75 ha / 185 acres
28 Beef Sucklers & followers
No accommodation



Opportunity #848

North Pembrokeshire
111 ha / 274 acres
500 Sheep
Accommodation available



Opportunity #854

Market Garden
Llanbister Road Powys
2 ha / 4.94 acres
Accommodation available



Opportunity #855

Aberdare / Merthyr Tydfil
120 ha / 296 acres
95 Pedigree Breeding
Welsh Black cows



Opportunity #798

Mid Ceredigion
83.9 ha / 200 acres
90 Holstein Dairy cows
with followers
Possible accommodation



Opportunity #846

Market Garden
Gower
Acreage to be agreed
No accommodation

