



FARMING
connect
cyswllt
FFERMIO

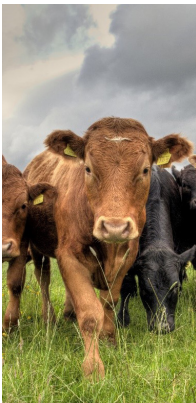
Farming Connect skills funding

...develop your skills, develop your business
...apply for training NOW

08456 000 813

The skills funding application window opens at
9am Monday 4 July 2022 until 5pm Friday, 29 July 2022

- All training courses subsidised by up to **80%** for registered individuals
- More than **70 courses** available, categorised under 'Business', 'Livestock' and 'Land'
- Network of **approved training providers** located throughout Wales



Cronfa Amaethyddol Ewrop ar
gyfer Datblygu Gwledig:
Ewrop yn Buddsoddi mewn Ardaloedd Gwledig
European Agricultural Fund for
Rural Development
Europe Investing in Rural Areas



Llywodraeth Cymru
Welsh Government

www.gov.wales/farmingconnect



Develop your skills, develop your business, apply for training NOW

Farming Connect offers more than 70 short training courses, broadly categorised under 'Business', 'Land' and 'Livestock', all subsidised by up to 80% for registered individuals. See Page 4 of this booklet for the full list of courses available at the time of going to print, or visit our website for the most up to date information.

Business related training ranges from business development, marketing and financial management to agricultural health and safety, food safety and diversification courses.

Livestock related training offers courses on a comprehensive range of sector-specific animal health and welfare topics ranging from general husbandry to biosecurity, breeding, nutrition and the safe use of antibiotics.

Land related training ranges from tractor and ATV driving, machinery handling and chainsaw courses to grazing management, woodland management, slurry handling and the safe use of pesticides.

Visit gov.wales/farmingconnectskillsandtraining for contact details of each approved training provider and an up to date list of the training courses each one offers.

- For further information and support at any stage of the application process, contact your local Farming Connect development officer (Page 7).

*If you intend to apply for training funding during the July window, and are not already personally registered as an individual, call the Service Centre on **08456 000 813** before **5pm Monday, 25 July 2022**



"Learning how to tackle business planning gave me the skills and confidence to focus on the farm's long-term business strategy. I also undertook a diversification course which really focused my thinking and is helping me prepare for setting up a new agri-tourism business."

Sarah Evans, Glamorgan

FARMING CONNECT TRAINING: - the simple online application process

Subsidised by
up to
80%

- 1** Before you can apply for training, you need to...
 - Be registered with Farming Connect with your own individual email contact which must be unique to you.
 - Receive a registration confirmation email from Farming Connect, which enables you to access the Business Wales (BOSS) website via Sign on Cymru (SOC) at <https://businesswales.gov.wales/boss>.

- 2** You will find detailed user guides and a 'how to' video on creating your own BOSS account via SOC on the Farming Connect website skills and training pages.

- Complete an online Personal Development Plan (PDP). This will help you identify the courses which will strengthen your skills and help you develop your business.
- You are now ready to complete your training application form.
- You will be asked to enter your selected course title, its exact cost and your chosen training provider.

Check all this information carefully with your training provider beforehand as you will be unable to correct any errors later.

- Once you are content – press SUBMIT

- 3** You will find detailed guidance on all the above on the Farming Connect website. Alternatively you can seek support from either your local Farming Connect development officer or your selected training provider.

You will be notified of the outcome of your application within approximately three weeks after the application window closes.



"Thanks to business management training I now do the books at home which means I can monitor cashflow and make better decisions. I also learned how to lead and manage farm workers. On the practical side, improved shearing skills are already saving the farm time and money."

Hari Roberts, Denbigh

Need a helping hand?

If you feel unsure about your eligibility, what you are entitled to apply for, or any part of the skills funding application process, help is at hand, whenever you need it...

- ✓ Visit the 'Skills and Training' page at gov.wales/farmingconnectskillsandtraining where you will find step by step guidance and a 'how to' video on the PDP and application processes and a 'how to' video on setting up an account with BOSS via Sign on Cymru.
- ✓ Contact your local development officer who will be happy to help you at any stage of the process and can talk you through any of the online processes if you need support.
- ✓ Contact your selected training provider (you'll find a list on the Farming Connect website, giving their contact details and a list of all the training courses each offer)



TOP TIPS

- ✓ Make sure you always have an up to date Personal Development Plan (PDP) and a relevant goal for each course you are applying for. You cannot apply for skills funding without a PDP, but it is also a very helpful tool to help you identify which skills you need to acquire or develop
- ✓ Before you press that critical 'SUBMIT' key, it is essential that the course title, course cost and training provider details are correct. Check this information carefully with your training provider beforehand as you will be unable to correct any errors later.
- ✓ If you are applying for any machinery and equipment related course, you **MUST** complete Farming Connect's e-learning Health and Safety course first, which is also only accessible through BOSS.



STORFA SGILIAU

– the secure online tool to help you reach your goals

Records of all Farming Connect training courses completed, which will be uploaded on your behalf, together with all other personal and professional development data and achievements (which you can upload yourself) can be stored and updated within your own secure, online *Storfa Sgiliau profile

* For further information on Storfa Sgiliau, visit gov.wales/farmingconnectstorfasgiliau

Training courses

BUSINESS TRAINING - 80% funding

Agriculture Health and Safety - Preparing for an Inspection

Book Keeping, VAT and Making Tax Digital (MTD)

Business Planning and Development

Emergency First Aid at Work

Environmental Awareness, Audit and Management for your Business

First Aid at Work

Introduction to Agricultural Business Planning

Keeping your Cash Flowing

Leading and Managing

Level 2 Award in Food Safety in Catering, Manufacturing or Retail

Level 2 Award in Health & Safety in the Workplace

Level 3 Award in Food Safety in Catering, Manufacturing or Retail

Level 3 Award in Supervisory Health & Safety

Manual Handling

Marketing your Business

Planning a Diversification or New Enterprise on a Farm

Planning Your Business for the Future

Understanding your Accounts and Financial Statements

Working at Heights Awareness and Risk Assessment

Working Safely in Agriculture / Horticulture Agriculture

LIVESTOCK TRAINING - 80% funding

Advanced Cattle Foot Trimming

Better Livestock Handling for Increased Profitability

Calf Management, Health and Housing (for both beef and dairy sectors)

Cattle Foot Trimming

Cattle Mobility Scoring

Cattle Scanning

DIY AI

Hygiene and Biosecurity (Poultry Passport)

Lambing Techniques

Lion Training Passport Biosecurity, Security and Egg Handling

Lion Training Passport Poultry Welfare Management

Lion Training Passport Poultry Welfare Operative

Mastering Medicines Course

Poultry Welfare (Poultry Passport)

Preparing for IPPC Regulations (Poultry Industry)

Safe Use of Sheep Dip

Safe Use of Vet & Med

Sheep Scanning

LAND TRAINING - 80% funding

Basic Tree Survey and Inspection
BASIS Foundation in Agronomy (Agriculture)
Conservation Grazing
Grey Squirrel Control
Mole Control - Trapping Techniques
Planting and Establishing Woodlands

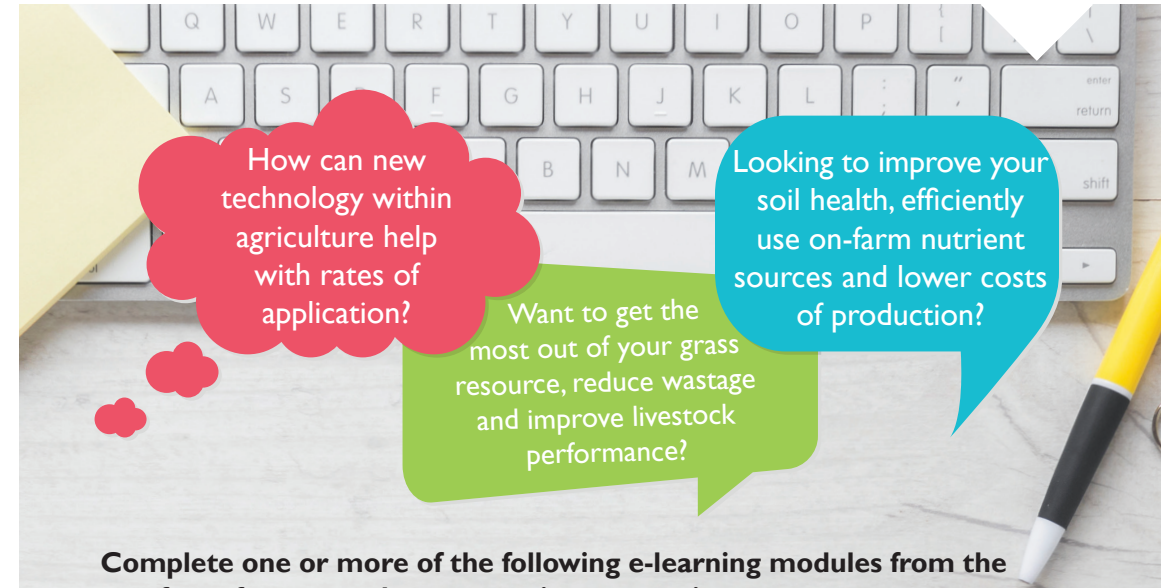
Rabbit and Mole Control - Trapping Techniques
Rodent Control on Farms
Safe Use and Application of Slurry
The Safe Use of Aluminium Phosphide for Vertebrate Control
Woodland Management for Conservation

LAND TRAINING (machinery based) - 40% funding

Chainsaw Maintenance and Cross-cutting
Chainsaw maintenance, Cross-cutting, Felling and Processing Trees up to 380mm
Counter Balance Lift Truck
Felling and Processing Trees over 380mm
Felling and Processing Trees up to 380mm
Severing Uprooted or Windblown Trees using a Chainsaw
Level 2 Award in the Safe Application of Pesticides Using Handheld Equipment (PA6)
Level 2 Award in the Safe Application of Pesticides Using Vehicle Mounted Boom Sprayer Equipment (PA2)
Level 2 Award in the Safe Application of Pesticides Using Vehicle Mounted Boom Sprayer Equipment (PA2F) - Weed Wiper
Level 2 Award in the Safe Use of Pesticides (PA1) & Safe Application of Pesticides Using Vehicle Mounted Boom Sprayer Equipment (PA2F) - Weed Wiper

Level 2 Award in the Safe Use of pesticides (PA1) & Safe Application of Pesticides/Granular Applicators (PA4)
Level 2 Award in the Safe Use of Pesticides (PA1)
Level 2 Award in the Safe Use of Pesticides (PA1) & Safe Application of Pesticides Using Hand Held Equipment (PA6)
Level 2 Award in the Safe Use of Pesticides (PA1) & Safe Application of Pesticides Using Vehicle Mounted Boom Sprayer Equipment (PA2)
Level 2 Award in the Safe Use of Pesticides / Granular Applicators (PA4)
Rough Terrain Telescopic Lift Truck
Sit- Astride ATV's including Loads and Trailed Equipment
Sit-in ATV Conventional Steered
Tractor Driving
Tractor Driving and Arm Mounted Cutting Equipment
Tractor Driving - Front End Loader
Tractor Driving on Slopes
Trailer Towing: On Road

E-LEARNING



How can new technology within agriculture help with rates of application?

Looking to improve your soil health, efficiently use on-farm nutrient sources and lower costs of production?

Want to get the most out of your grass resource, reduce wastage and improve livestock performance?

Complete one or more of the following e-learning modules from the comfort of your own home, at a time convenient to you:

- Controlled Environment Agriculture (CEA)
- Farm Business Diversification
- Farm Nutrient Management
- Farmyard Composting
- Grassland Species
- Grazing Management
- Grazing Systems
- Improving Soil Health
- Precision Technology in Agriculture
- Reducing Agri-Pollution
- Slurry Management
- Weed Control

Test your knowledge and self-assess what you've learnt via a short multiple-choice quiz. For further module information and how to access e-learning, visit the Farming Connect website - gov.wales/farmingconnectskillsandtraining

FARMING CONNECT DEVELOPMENT OFFICERS

...providing support at a local level



1 **YNYS MÔN
ANGLESEY**
Trystan Siôn
07985 379821
trystan.sion@menterabusnes.co.uk



2 **LLŶN AC ERYRI
LLŶN AND SNOWDONIA**
Osian Hughes
07415 757 461
osian.hughes@menterabusnes.co.uk



3 **MEIRIONNYDD
MEIRIONNYDD**
Eryl P Roberts
07917 895253
eryl.roberts@lantra.co.uk



4 **GOGLEDD CEREDIGION
NORTH CEREDIGION**
Marc Bowen
07985 379887
marc.bowen@menterabusnes.co.uk



5 **DE CEREDIGION
SOUTH CEREDIGION**
Dewi Jones
07896 837725
dewi.jones@menterabusnes.co.uk



6 **GOGLEDD PENFRO
NORTH PEMBROKESHIRE**
Rhiannon James
07985 379927
rhiannon.james@menterabusnes.co.uk



7 **DE PENFRO
SOUTH PEMBROKESHIRE**
Susie Morgan
07867 908193
susie.morgan@lantra.co.uk



8 **DE SIR GÂR
SOUTH CARMARTHENSHIRE**
Gareth Griffiths
07772 694112
gareth.griffiths@menterabusnes.co.uk



9 **GOGLEDD SIR GÂR
NORTH CARMARTHENSHIRE**
Alun Bowen
07896 262736
alun.bowen@menterabusnes.co.uk



10 **DE CYMRU
SOUTH WALES**
Hannah Wright
07984 251190
hannah.wright@menterabusnes.co.uk



11 **SIR FYNWY, TORFAEN A BLAENAU
GWENT
MONMOUTHSHIRE, TORFAEN AND
BLAENAU GWENT**
Lisa Powell
07772 694952 lisa.powell@menterabusnes.co.uk



12 **BRYCHEINIOG
BRECKNOCK**
Gwen Price
07487 254843
gwen.price@menterabusnes.co.uk



13 **MAESYFED
RADNORSHIRE**
Natalie Chappelle
07985 379928
natalie.chappelle@menterabusnes.co.uk



14 **DE SIR DREFALDWYN
SOUTH MONTGOMERYSHIRE**
Elin Haf Williams
07508 867212
elin.haf.williams@menterabusnes.co.uk



15 **GOGLEDD SIR DREFALDWYN
NORTH MONTGOMERYSHIRE**
Owain Pugh
07904 457316
owain.pugh@menterabusnes.co.uk



16 **WRECSAM A FLINT
WREXHAM AND FLINT**
Gwenno Puw Rowlands
07772 694098
gwenno.puw.rowlands@menterabusnes.co.uk



17 **DINBYCH
DENBIGH**
Elen Williams
07985 379904
williams.elen@menterabusnes.co.uk



18 **CONWY
CONWY**
Guto Owen
07896 996832
guto.owen@menterabusnes.co.uk