

What is the CQFW?

The Credit and Qualifications Framework for Wales (CQFW) can help you understand and compare qualifications.

What is credit?

Credit is a way of recognising learning achievements. 1 credit is awarded for every 10 hours of notional learning time. A qualification worth 4 credits is therefore roughly equal to 40 hours of learning. The learning time is an estimation of the typical length of time required for an average learner – some learners may take more time, some less.

What do the CQFW levels mean?

A unit or qualification's level indicates how challenging it is – the higher the level the more difficult it is. The 'Fan' diagram shows the CQFW levels and some examples of the different types of learning available at each level.

How can the CQFW help me?

The CQFW can help you make decisions about your learning and how you want to progress, either from one level to the next or to different types of learning. It can also help employers and learning providers understand what you have already achieved.



How can I compare my qualifications?

You can make broad comparisons between Welsh qualifications and those from other UK and European countries using the UK 'Qualifications can Cross Boundaries' guide. This can be useful if you are considering working or studying in other parts of the UK or another country, or if you are new to Wales. UK ENIC can help with specific comparisons of international qualifications if necessary – visit www.enic.org.uk

Want more information?

If you would like more information about how the CQFW can help you, contact cqfw.enquiries@gov.wales / visit gov.wales/cqfw

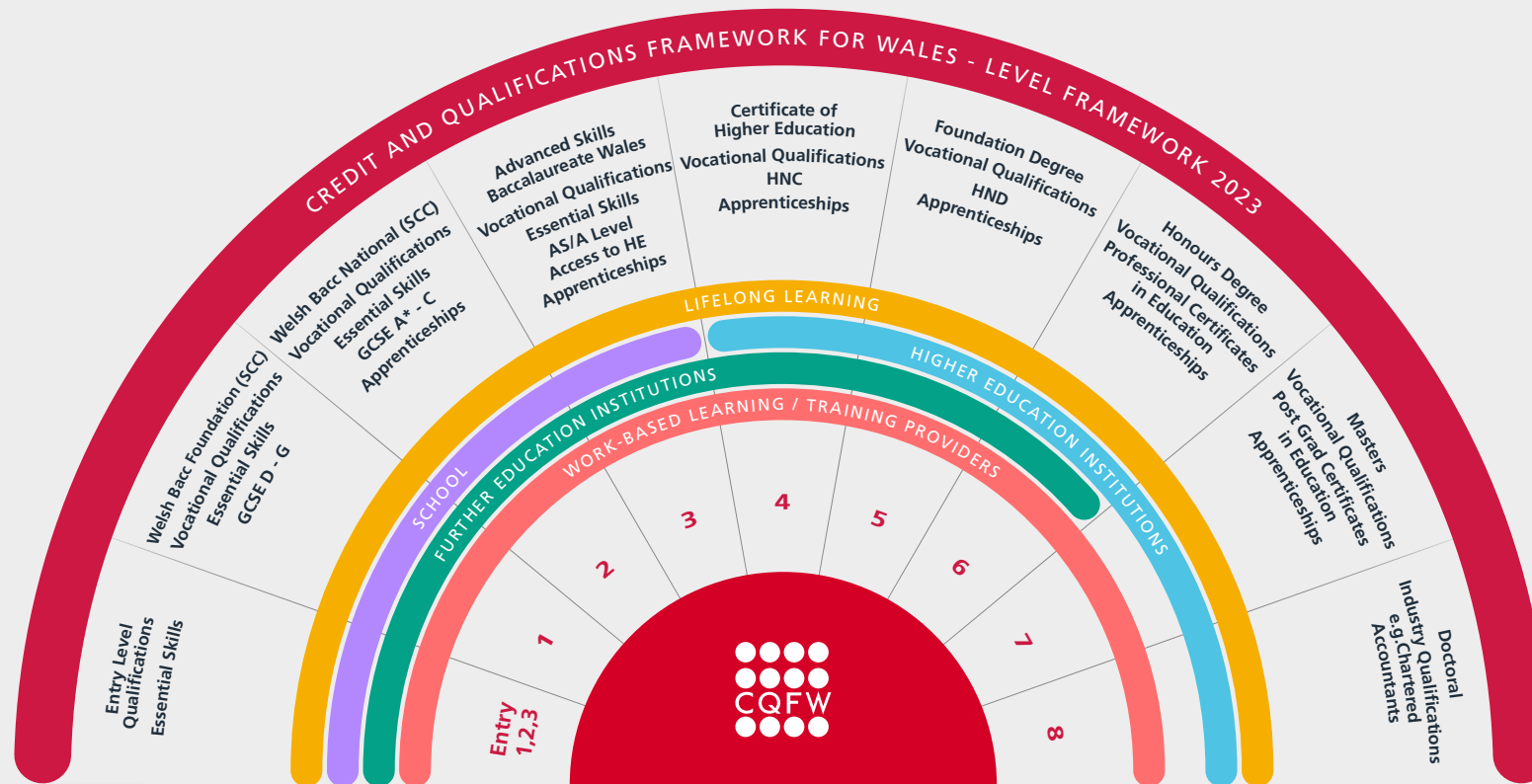




CQFW Fan Diagram 2023

The Credit and Qualifications Framework for Wales is a fully inclusive learning framework. The Levels capture all learning from the very initial stages (Entry, 1, 2 & 3) to the most advanced (Level 8).

The fan diagram below illustrates the levels and examples of qualifications and learning provision that are included in it.



• Pre-entry level accreditation is delivered in schools, FE Institutions and within lifelong learning. This level is differentiated further to provide a progression route for those learners with Additional Learning Needs (ALN).

• Where level 3 provision is integrated into HE provision, e.g. a degree course with an integrated foundation year, then a student is considered to be studying for a HE qualification in all years of that course.

For further details: Visit gov.wales/cqfw or e-mail CQFW.Enquiries@gov.wales