

## What is the CQFW?

The Credit and Qualifications Framework for Wales (CQFW) allows businesses to understand and compare qualifications in Wales.

---

### What is credit?

Credit is a way of recognising learning achievements. 1 credit is awarded for every 10 hours of notional learning time. A qualification worth 4 credits is therefore roughly equal to 40 hours of learning. The learning time is an estimation of the typical length of time required for an average learner – some learners may take more time, some less.

---

### What do the CQFW levels mean?

A unit or qualification's level indicates how challenging it is – the higher the level the more difficult it is. The 'Fan' diagram shows the CQFW levels, some examples of qualifications at each level and the type of learning provision which is recognised.

When you are interpreting the CQFW it is important to be aware that whilst qualifications with the same level are broadly similar in terms of demand, complexity and learner autonomy, their content and size may differ.

---

### How can the CQFW help me?

The CQFW can help you understand qualifications held by your employees and assist when making decisions about their future learning and progression pathways.

It can also help you understand and compare qualifications held by potential employees if you are recruiting. This can be particularly useful if applicants are from overseas and help you understand competency levels where qualifications are different to those in Wales and the UK.



You can make broad comparisons between Welsh qualifications and those from other UK and European countries using the UK 'Qualifications can Cross Boundaries' guide. UK ENIC can help with specific comparisons of international qualifications if required – visit [www.enic.org.uk](http://www.enic.org.uk)

---

### Is my in-house training recognised?

The Lifelong Learning pillar recognises in-house company training provided it complies with the CQFW 'High Level Principles'. These provide assurance to learners that qualifications and learning programmes have been correctly levelled, that credit will be awarded upon achievement and that learning is based on recognised standards.

Visit [gov.wales/cqfw](http://gov.wales/cqfw) for more information.

If your in-house training does not comply with the High Level Principles you may wish to contact a UK regulated awarding body to have it assigned a CQFW level and seek assurance of compliance, or even apply for formal accreditation (quality assurance, certification and badging).

---

### Want more information?

If you would like more information about the CQFW contact [gov.wales/cqfw](http://gov.wales/cqfw)

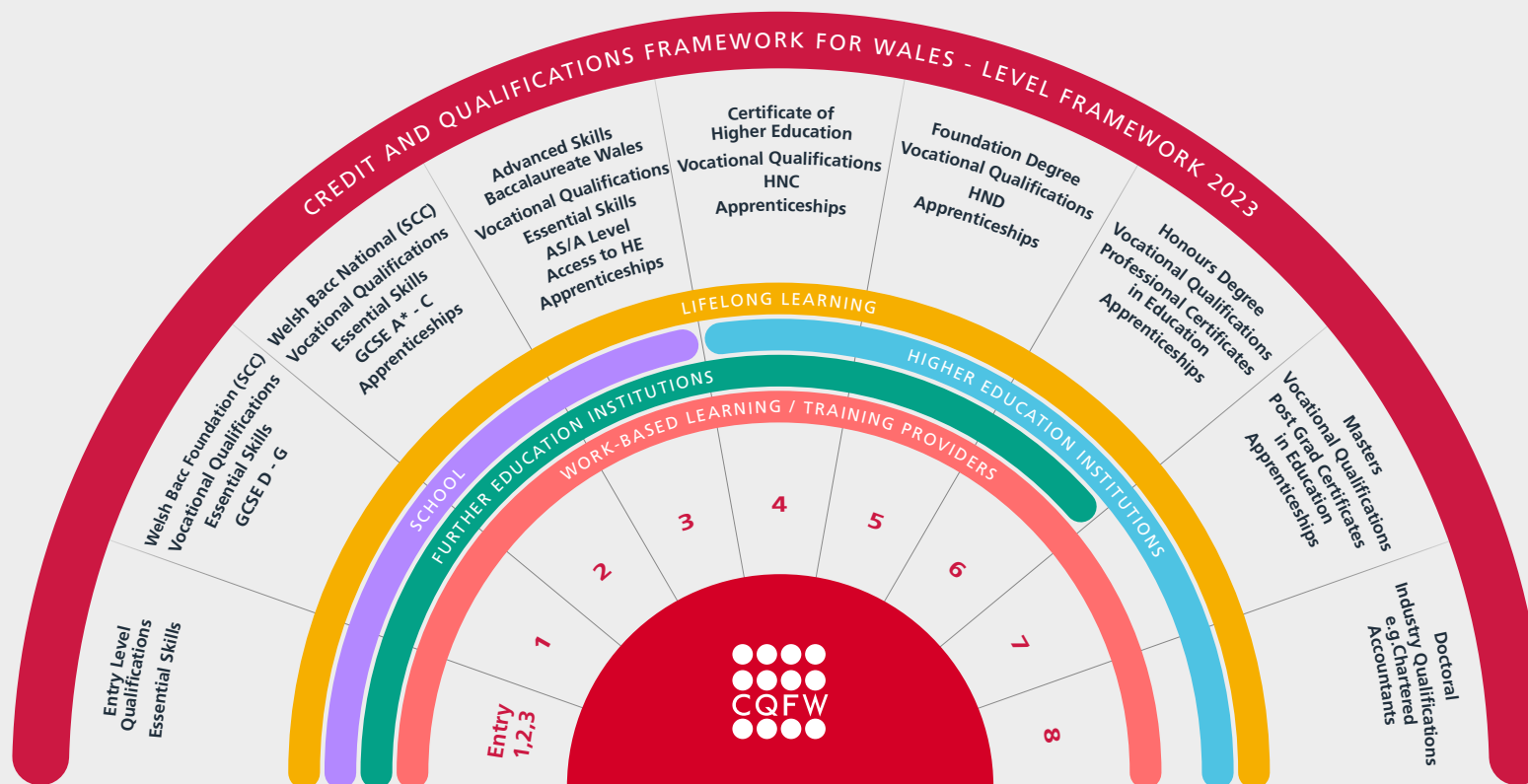




## CQFW Fan Diagram 2023

The Credit and Qualifications Framework for Wales is a fully inclusive learning framework. The Levels capture all learning from the very initial stages (Entry, 1, 2 & 3) to the most advanced (Level 8).

The fan diagram below illustrates the levels and examples of qualifications and learning provision that are included in it.



• Pre-entry level accreditation is delivered in schools, FE Institutions and within lifelong learning. This level is differentiated further to provide a progression route for those learners with Additional Learning Needs (ALN).

• Where level 3 provision is integrated into HE provision, e.g. a degree course with an integrated foundation year, then a student is considered to be studying for a HE qualification in all years of that course.

For further details: Visit [gov.wales/cqfw](http://gov.wales/cqfw) or e-mail [CQFW.Enquiries@gov.wales](mailto:CQFW.Enquiries@gov.wales)