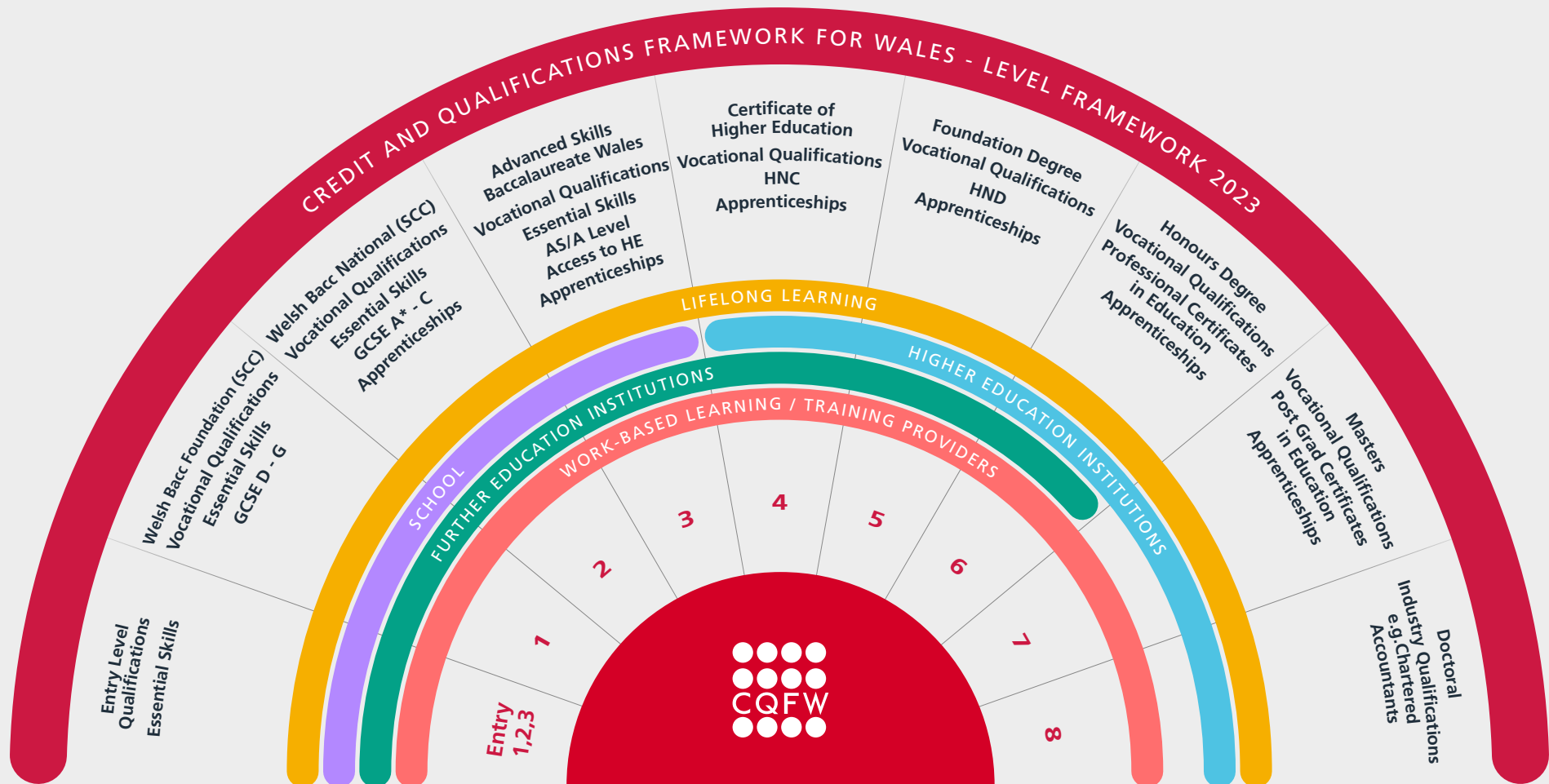


CQFW Fan Diagram 2023

The Credit and Qualifications Framework for Wales is a fully inclusive learning framework. The Levels capture all learning from the very initial stages (Entry, 1, 2 & 3) to the most advanced (Level 8).

The fan diagram below illustrates the levels and examples of qualifications and learning provision that are included in it.



• Pre-entry level accreditation is delivered in schools, FE Institutions and within lifelong learning. This level is differentiated further to provide a progression route for those learners with Additional Learning Needs (ALN).

• Where level 3 provision is integrated into HE provision, e.g. a degree course with an integrated foundation year, then a student is considered to be studying for a HE qualification in all years of that course.