



Abercrave & Ystradgynlais

Energy Local Opportunities in Powys

The Green Valleys CIC

CRiC, Beaufort Street, Crickhowell, NP8 1BN

www.thegreenvalleys.org



The Abercrave & Ystradgynlais Energy Zone

1. Description

The zone consists of two substation areas on the south east border of Powys.

The Abercrave area contains the upper Tawe catchment and the settlements of Abercrave, Craig y Nos and Pen y Cae. The Ystradgynlais area is the town and surrounding settlements on either side of the Powys border.

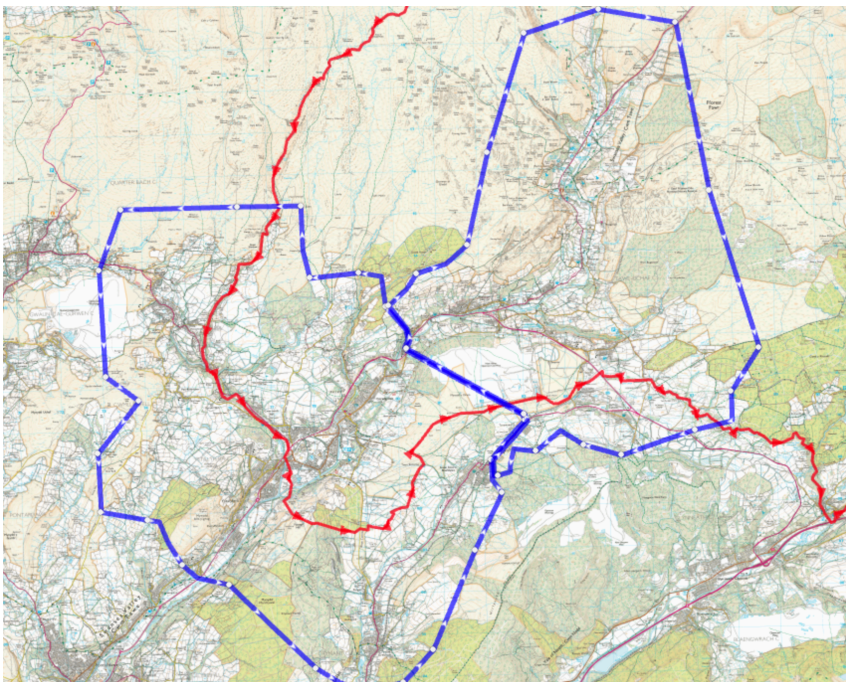


Figure 1 – Abercrave energy zone map

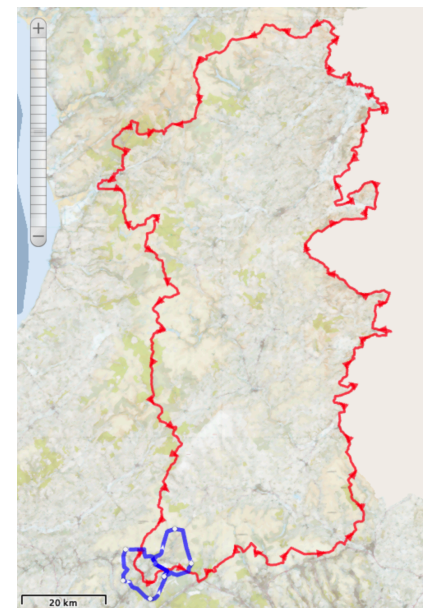


Figure 2 - Powys map

2. Potential viability of an Energy Local Club

There are only three hydro systems in this area, which is perhaps surprising and there is certainly potential for more installations in future. However, only one of these is large enough to have the potential export capacity. It is also possible that there is significant on-site use of this generation and that there would not be enough export throughout the year to form a viable club.

If the hydro export potential is adequate, the potential consumer members are all within quite a small area, which assists with promotion and recruitment.

It is perhaps surprising that there are no wind turbines in this zone, given that a large part of it is outside of the Brecon Beacons National Park. This might change in the future and Ystradgynlais would provide a suitable volume of potential consumers to form the club membership.

Summary of renewable generation in this energy zone

Table 1 - Summary of larger renewable generators in the Abercrave and Ystradgynlais Zone

	Number of Registered Schemes	Total Installed Capacity	Average Capacity (kW)	Estimated kWh Produced p.a	Approx Number of Homes p.a Equivalent
Hydro	3	107.5	35.8	430,000	108
Wind	0	0.0	0.0	0	0
PV >4kW	8	126.0	15.8	100,800	25
TOTAL	11	233.5	21.2	530,800	133

3. Actions to create a successful Energy Local Club

- Approach the largest hydro generator and assess interest in engaging with Energy Local
- Engage with community groups in Abercrave and Pen y Cae to assist with recruitment
- Keep a watching brief for new installation in this area, including wind (likely outside of Powys), which could potentially serve an Energy Local club.

4. Overall assessment

An Energy Local Club is potentially viable providing the single largest hydro generator can be engaged successfully. The club would be relatively small and recruitment is aided by the potential consumer members all being located in Pen y Cae and Abercrave.