



Brecon & Glasbury

Energy Local Opportunities in Powys

The Green Valleys CIC

CRIC, Beaufort Street, Crickhowell, NP8 1BN

www.thegreenvalleys.org



The Brecon and Glasbury Energy Zone

1. Description

The substation in Brecon distributes electricity eastward to Talybont and Llangorse, westward to the Powys border, south to all the settlements located on the north slope of the central Beacons range and northward to Merthyr Cynog. The Glasbury substation serves this part of the Wye valley including Talgarth, Hay on Wye, Bronllys, Llyswen and Erwood. Both areas include parts of the Brecon Beacons National Park.

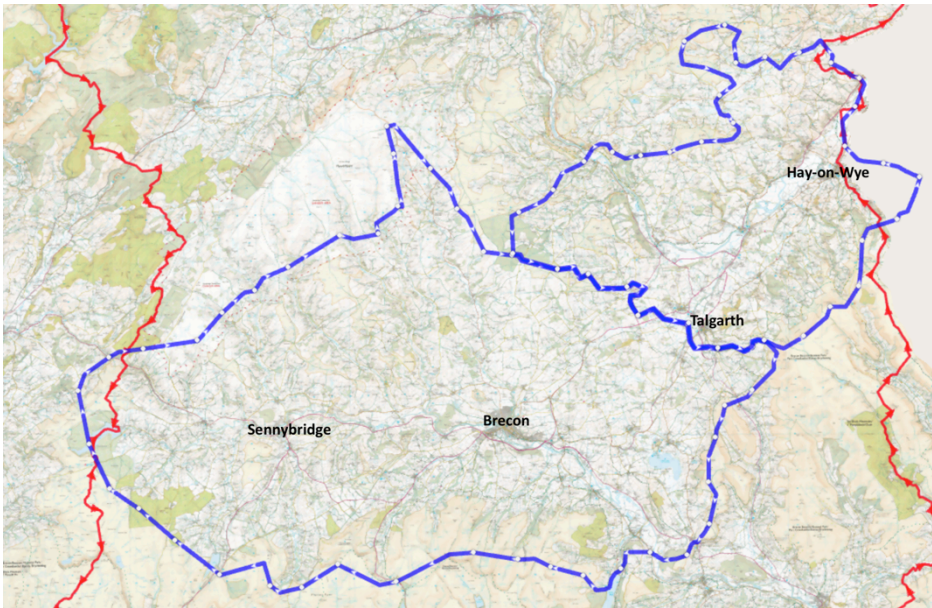


Figure 1 – Builth energy zone map

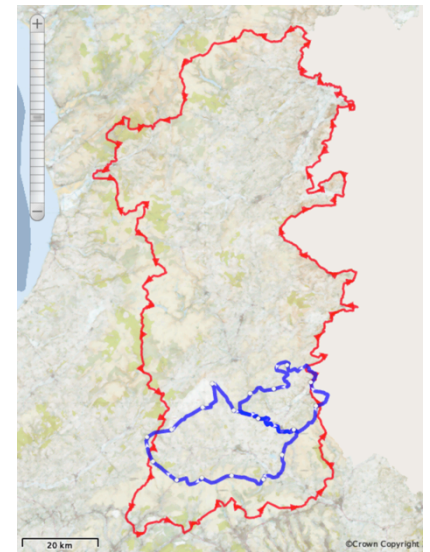


Figure 2 - Powys map

2. Potential viability of an Energy Local Club

The Brecon and Glasbury Energy Zone is a combined zone including the areas of two substations. An individual Energy Local club would need generator and consumers in the same substations zone, they have been combined for assessment as data searches do not indicate precisely which zone a specific generator is located within.

There are a large number of potential generators within this zone and a number of larger settlements. It is certainly possible that multiple clubs could be established in this area if more than one generator can be found. This can occur if the generator and consumers are located on a single circuit loop from either substation.

Circuits serving the more rural areas to the south actually have most potential due to the number of hydro schemes in the upland areas.

Summary of renewable generation in this energy zone

Table 1 - Summary of larger renewable generators in the Brecon and Glasbury Zone

	Number of Registered Schemes	Total Installed Capacity	Average Capacity (kW)	Estimated kWh Produced p.a	Approx Number of Homes p.a Equivalent
Hydro	15	353.2	23.5	1,412,800	353
Wind	3	38.2	12.7	76,400	19
PV >4kW	15	311.9	20.8	249,544	62
TOTAL	33	703.3	21.3	1,738,744	435

3. Actions to create a successful Energy Local Club

- Approach a hydro generator that could be anywhere within the energy zone but most likely areas are Sennybridge, Crai and Talybont.
- If a generator can be found, form a local group in the closest settlements to aid recruitment of approximately 40 Club members. If enough club members can be found close to the generator, it might be possible to establish a very localized club with generators and members connected to only a single circuit loop on the distribution network.
- If more generators can be engaged, it might be possible to create multiple clubs within the same substation area, each using a circuit loop. This very local connection might aid uptake, ownership and recruitment.

4. Overall assessment

Multiple Energy Local clubs are possible in this area, particularly the Brecon substation area. Once a generator is found, efforts to recruit the necessary consumers should focus on the circuit loop. There is too much potential in the area to result in only a single Club, as this would involve only a single generator and a very limited number of clubs members and beneficiaries.