



Builth

Energy Local Opportunities in Powys

The Green Valleys CIC

CRiC, Beaufort Street, Crickhowell, NP8 1BN

www.thegreenvalleys.org



The Builth Energy Zone

1. Description

The substation in Builth distributes electricity across a large area of agricultural land, isolated properties, small settlements. The area includes all the settlements in the Irfon valley from Builth Wells to Llanwrtyd Wells to the West, south as far as Erwood, eastward to within a few miles of the Powys border and north to reach, but not include, Newbridge on Wye.

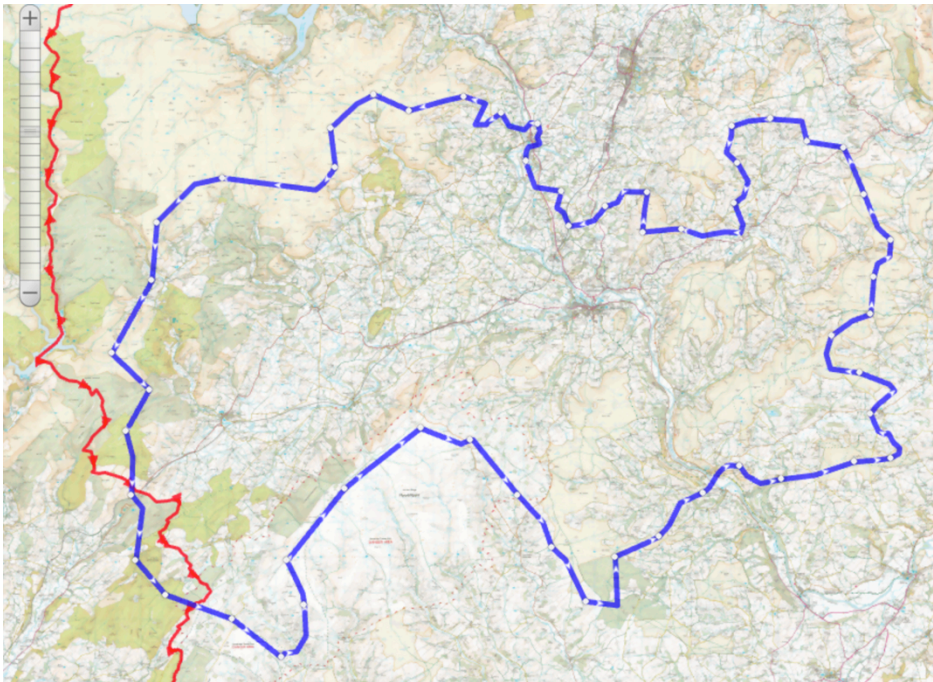


Figure 1 – Builth energy zone map

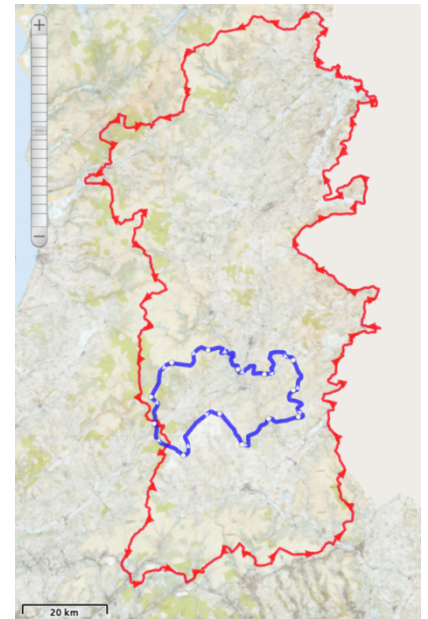


Figure 2 - Powys map

2. Potential viability of an Energy Local Club

There are thirteen suitable renewable generators within this zone and a good mix of wind, solar and hydro. Wind or hydro provides the best solution as periods of high generation in winter match the periods of high demand.

There are however quite a limited number of potential generators. As with all Clubs, they are only viable if a generator can be found who would join the Club and a limited number can result in difficulties finding a generator.

There are only two principle settlements in the area – Builth and Llanwrtyd Wells and it is likely that to recruit enough consumer members, at least one of these towns would need to be targeted. Ideally, generators close to either town should be approached as the limited volume of generation would only require a relatively small membership.

For generators located within the more rural area, the local settlements could be targeted for consumer recruitment, but this might require a larger proportion of the local residents to join.

Summary of renewable generation in this energy zone

Table 1 - Summary of larger renewable generators in Builth Zone

	Number of Registered Schemes	Total Installed Capacity	Average Capacity (kW)	Estimated kWh Produced p.a	Approx Number of Homes p.a Equivalent
Hydro	4	92.7	23.2	370,800	93
Wind	3	109.9	36.6	219,800	55
PV >10kW	6	280.0	46.7	223,960	56
TOTAL	13	482.6	37.1	814,560	204

3. Actions to create a successful Energy Local Club

- Approach a wind or hydro generator, ideally located close to Builth or Llanwyrtd
- If a generator can be found, form a local group in the town to aid recruitment of approximately 30 Club members
- A generator located away from the towns is also possible, but will result in a more limited pool of potential consumers to form the Club.

4. Overall assessment

An Energy Local Club is potentially viable but limited generators and dispersed population result in a challenging Club to establish. Local knowledge and contacts to engage generators will be valuable.