



Montgomery

Energy Local Opportunities in Powys

The Green Valleys CIC

CRiC, Beaufort Street, Crickhowell, NP8 1BN

www.thegreenvalleys.org



The Montgomery Energy Zone

1. Description

This relatively small zone includes the town of Montgomery and the section of the Severn valley to the east of the town. Much of this zone is sparsely populated agricultural land, but does include the settlements of Berriew, Llandyssil Kingswood and Cilcewydd. The Mid Wales Airport is also within this zone.

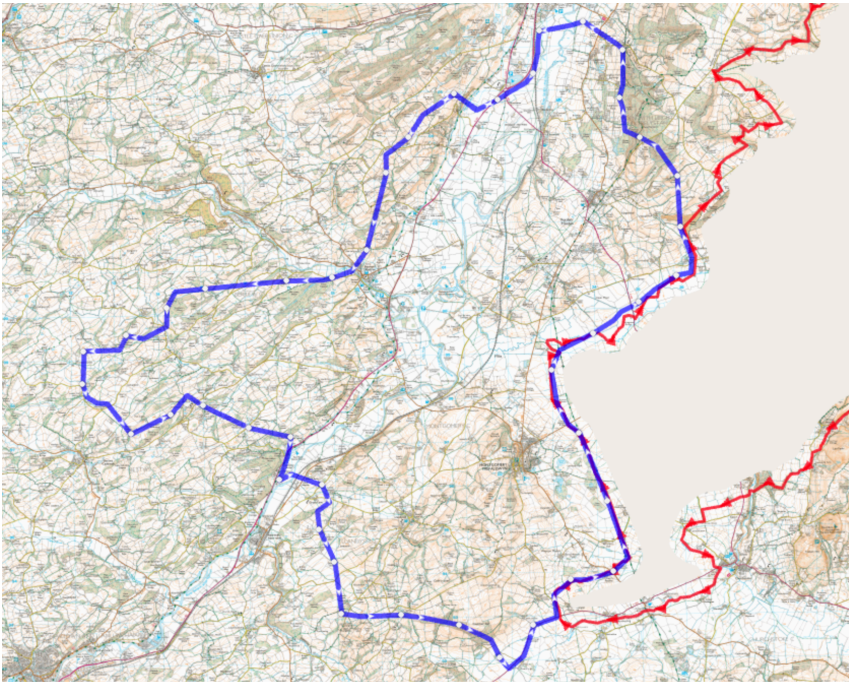


Figure 1 – Montgomery energy zone map

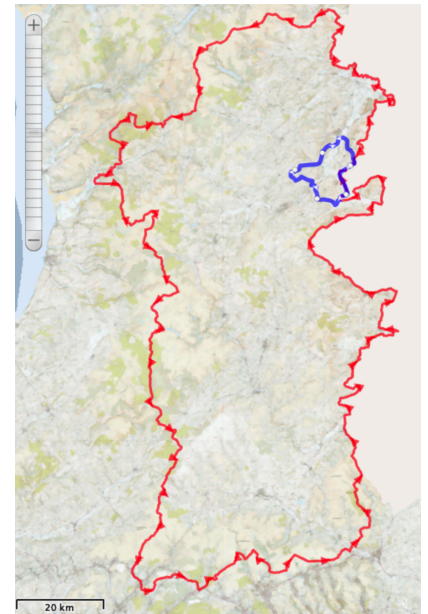


Figure 2 - Powys map

2. Potential viability of an Energy Local Club

There are only two small wind turbines in this zone and neither have sufficient capacity to support a viable Energy Local Club.

There are eleven larger solar PV arrays in this zone. Solar PV is unsuited to supply Energy Local Clubs as the at the times of peak consumer demand in winter the solar generation is lowest. In addition, there is an expectation that these solar PV installations are likely to be on diary units, chicken sheds and industrial buildings. These sites typically have quite high consumption and so have little excess generation to export to serve a Club.

Summary of renewable generation in this energy zone

Table 1 - Summary of larger renewable generators in the Montgomery Zone

	Number of Registered Schemes	Total Installed Capacity	Average Capacity (kW)	Estimated kWh Produced p.a	Approx Number of Homes p.a Equivalent
Hydro	0	0.0	0.0	0	0
Wind	2	12.0	6.0	24,000	6
PV >4kW	11	752.2	68.4	601,776	150
TOTAL	13	764.2	58.8	625,776	156

3. Actions to create a successful Energy Local Club

- Engage with a local community group and provide an introduction to Energy Local
- Local group then to have a watching brief for any new solar PV or wind developments and approach to engage interest in Energy Local in the future.

4. Overall assessment

Currently the lack of generators make an Energy Local Club unviable.