



SUCCESS STORY

Llanwrtyd & District Heritage and Arts Centre exists to record and promote the history, culture and heritage of this area of mid-Wales. It is housed in a sensitively renovated Congregational Chapel near the centre of Llanwrtyd.

Llanwrtyd & District Heritage & Arts Centre

It is also home to an art gallery, runs events, and hosts the History Resource Group which continues to record images and memories for future generations of visitors and residents.



Addoldai Cymru





THE CHARITY

Location
Llanwrtyd Wells, Powys
Type
Charity
Web Site
<http://history-arts-wales.org.uk/>
Employee
1 part-time Centre Manager
Volunteers

THE CHAPEL

Llanwrtyd Chapel was built in 1867 by the prolific Welsh Independent architect, Reverend Thomas Thomas of Landore, Swansea. It is built in the Simple Gothic style with a gable-entry plan and is a typical large urban chapel of the 1860s. Its main gable front to the road has a central doorway and porch flanked by tall double lancet windows in a typical Thomas design of the period. Over the doorway is a gothic equivalent of an arched Venetian window with a scrollwork plaque and above that in the gable, a circular attic vent with a quadrefoil design. The block brick cornice which follows the eaves down onto corner buttresses is another Thomas design feature, as is the use of the scroll plaque bearing the date. The chapel sides have three tall gothic arched windows with 'Y' tracery. The chapel is important as a good, typical example of the prolific Thomas Thomas' almost 1,000 chapel designs.

Case Study! THE SOLUTION

When the doors of the Chapel closed to worshippers in 2009 a group of volunteers began a campaign to save it and developed the idea of creating an arts and heritage Centre. After many years of fundraising and hard work the Centre opened its doors again to visitors in 2016.

THE RESULTS

The Centre employs a part-time Centre Manager for two mornings a week. This is essential in terms of managing and maintaining voluntary stewards. In addition to looking after the stewards, the Manager is also responsible for marketing the Centre. It was felt that without a paid employee, the Centre would collapse. There are regular meetings, socials and an annual outing arranged for the stewards.

The Centre is open for four days a week and attracts an average of 100 visitors per week. The rota of voluntary stewards makes it difficult to be open for longer than that. Two stewards are on duty in the morning and two in the afternoon – a total of 16 stewards. Stewards are given a Health and Safety Handbook and a Front of House Course prior to commencing their role. There is no specific historical information training however, as when beginning their stewardship, prospective stewards shadow a more experienced colleague in order to learn more about their local history.

Income generation

The Centre has a cottage that generates a rental of £5,300pa

The Centre has a media centre and makes copies of any photographs in return for a small donation

The Centre holds an Annual Coffee Morning which raises around £600

There is a “Friends of” membership that raises annual subscriptions of around £2,000

There is an annual raffle, and a small annual income from concerts, which together raise another £2,000

There is a small commission, around £1,000 from the sale of artwork exhibited at the Centre and there is also a donations well for visitors, which raises around £1,300pa

Other individual gifts and donations raise around £1,000pa

There is a small retail area that generates an income of £4,000pa

The Centre raises around £17,200pa

Expenditure

Wages	3,538
Retail Purchase	2,480
Insurance	1,383
Printing, postage and stationery	180
Advertising	160
Marketing	3,157
General Expenses	267
Telephone	491
Computers	430
Light & Heat	1,087
Repairs & Maintenance	2,200
Cleaning	391

Total Expenditure £15,764pa



“Interactive maps find key places in history”

“Listen to memories of local residents and gain an insight into now-lost daily life”

The chapel space has been sensitively converted and modernised to house the visitor centre which has bilingual interactive exhibits that show the history of this part of Wales and the town as a major tourist attraction when it hosted a spa.

There is an informative timeline, chronologically detailing the history of the area. There is an interactive mapping resource that allows the visitor to take a journey through the changes that have occurred, utilising old photographs and archive material.

There are audio recordings, artifacts and many displays. All the displays are incorporated into hardy and durable interpretation stands which can easily be moved to house concerts and other events.

Although the chapel space has been reconfigured and modernised, it has also kept much of the important architectural features, such as the gallery space that now houses a meeting space and other important religious features such as the pulpit and memorials



“Interpretative Timeline
‘Follow the Frog’
to complete a quiz.

Movable stands enables
flexible space”



At the heart of the visitor centre is a reception area, a focal point for visitors to find out what is going on in the Centre. It is also a place to present leaflets, programmes as well as sell items such as calendars.

Adjacent to this is a small bookshelf that sells "Welsh" crafts, a small but necessary income generator, as well as a glass donation bowl.

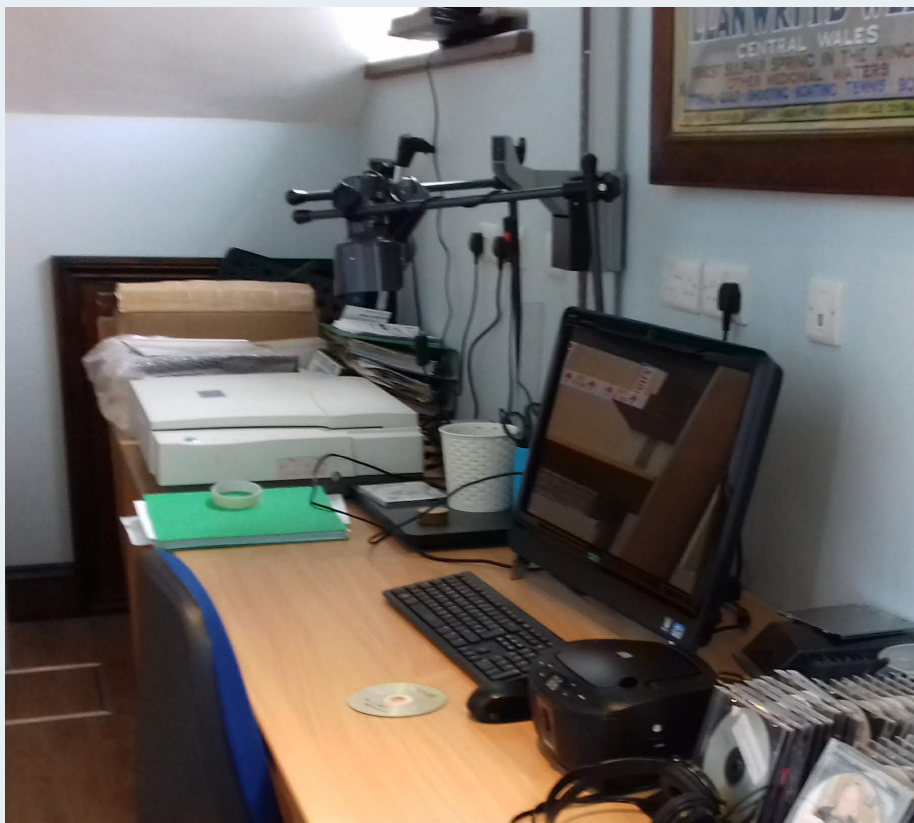
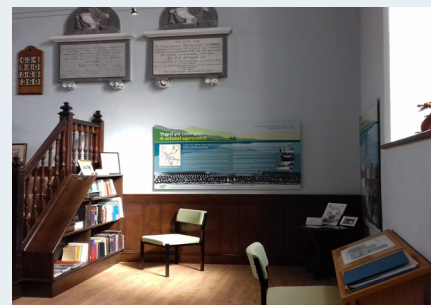
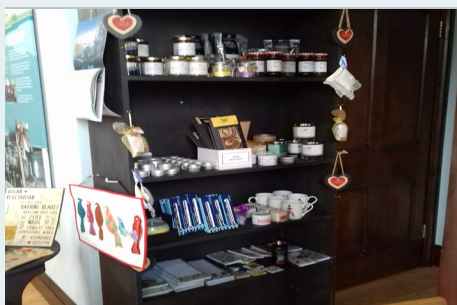
The Centre encourages visitors to come and read at small local reference library, and also has a media centre where it continues to collect and digitise archive material, collect audio and makes copies of photographs and other archive material for a small donation.

Llanwrtyd & District Heritage and Arts Centre
Ffos Road
Llanwrtyd Wells
Powys LD5 4RG,

Opening hours

Thursday–Sunday: 10:00AM–4:00PM
Bank Holidays & Event Days
April to October

FREE ENTRY
ACCESSIBLE TO ALL



"Library corner, meeting
space and media
centre"

"reflection and collection"



Addoldai Cymru

Addoldai Cymru
www.welshchapels.org