

CEFNOGAETH ARLOESED HYBLYG NEWYDD

Digwyddiad Ar-lein:

Dydd Iau 8 Mehefin 2023 | 09:30 - 10:45

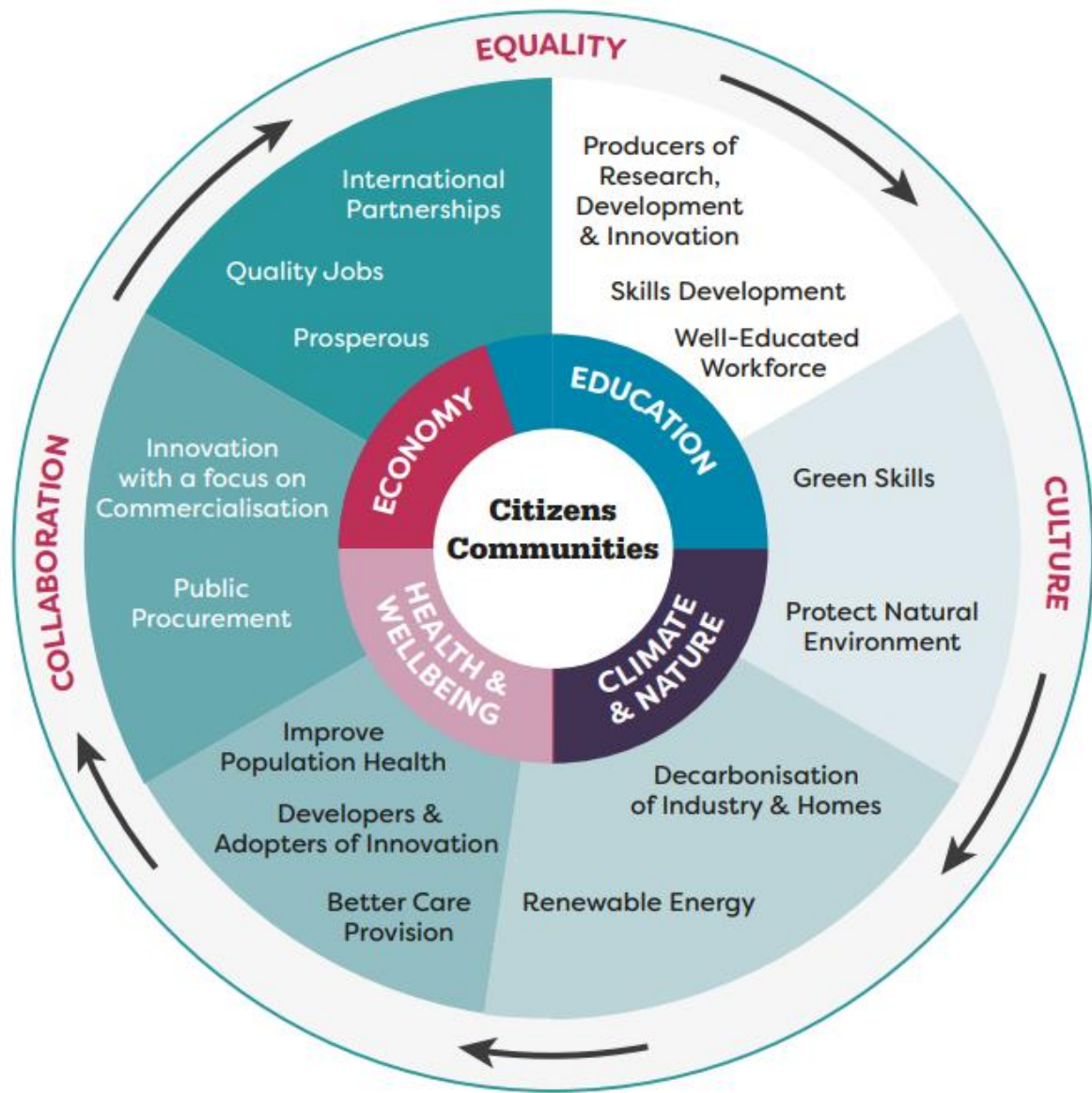
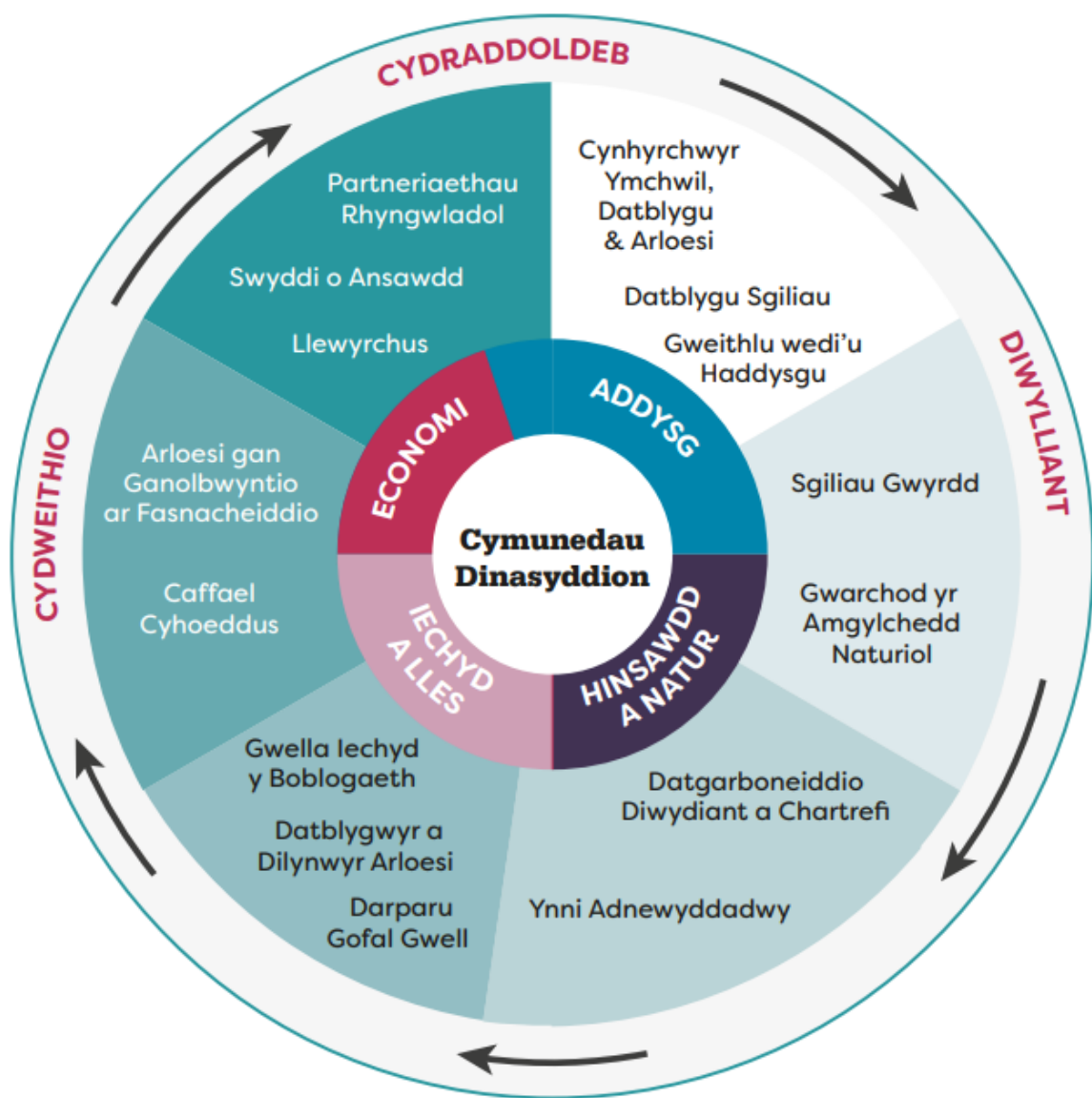
NEW FLEXIBLE INNOVATION SUPPORT

Online Event:

Thursday 8 June 2023 | 09:30 - 10:45



Y M G Y R C H O E D D A R L O E S I I N N O V A T I O N M I S S I O N S



Cynllun Cyflawni

- Mae cynllun cyflawni yn cael ei ddatblygu ar y cyd â Phlaid Cymru a bydd yn cael ei oruchwylio gan CCCA
- Memorandwm Cyd-ddealltwriaeth rhwng Llywodraeth Cymru ac Innovate UK – Lansio 27 Ebrill 2023

Delivery Plan

- A Delivery Plan is being jointly developed with Plaid Cymru and will be overseen by IACW
- Memorandum of Understanding between Welsh Government and Innovate UK - Launch 27 April 2023



C Y N L L U N C Y F L A W N I
D E L I V E R Y P L A N

Tair thema:

- Cysylltu cymorth
- Eich sbarduno i arloesi
- Data ar gyfer Cymru decach a mwy llewyrchus

Cymorth ychwanegol:

- Tynnu sylw at gystadleuaeth
- Cyfarfodydd cymorth arloesi
- Gweminarau Arloesi Diweddarau Neges
- Cyllid Ymgynghori
- crisp@llyw.cymru

Three themes:

- Connecting support
- Stimulating Innovation
- Data for a fairer and more prosperous Wales

Additional support:

- Competition alerts
- Innovation support meetings
- Innovation Drumbeat Update Webinars
- Consultancy Funding
- crisp@gov.wales



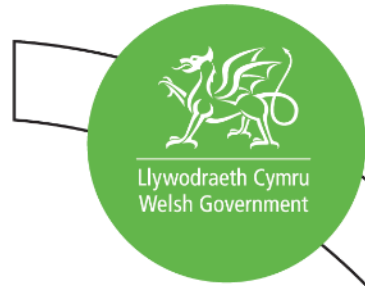
C Y N L L U N C Y F L A W N I
D E L I V E R Y P L A N

CEFNOGAETH ARLOESED
HYBLYG SMART (SMART FIS)

SMART FLEXIBLE
INNOVATION SUPPORT
(SMART FIS)



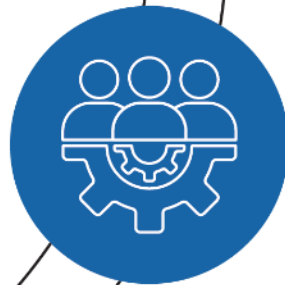
C E N A D A E T H A U / M I S S I O N S



Yn cyd-fynd ag ymrwymïadau'r Rhaglen Lywodraethu
Align with Programme for Government commitments



Meithrin twf cynaliadwy trwy Ymchwil a Datblygu ac Arloesi
Nurture sustainable growth through R&D&I.



Datblygu amgylchedd Ymchwil a Datblygu ac Arloesi cydweithredol
Grow a collaborative R&D&I environment



Cefnogi caffael cyhoeddus ar gyfer atebion arloesol
Support public procurement of innovative solutions

GWELEDIGAETH

Cymru i fod yn arweinydd wrth ddatblygu, esblygu a darparu cefnogaeth Ymchwil a Datblygu hyblyg i ddiwallu anghenion sefydliadau i wella bywydau.

VISION

Wales to be a leader in developing, evolving and delivering flexible R&D&I support to meet the needs of organisations to improve lives.

S W Y D D O G A E T H A U / R O L E S

Arweinydd Arloesi Innovation Leader

- Meithrin diwylliant o arloesi mewn sefydliadau a chymdeithas
- Nurture a culture of innovation in organisations and society

Partner Arloesi Innovation Partner

- Gweithio gyda a chefnogi sefydliadau i benderfynu a llywio eu cynlluniau Ymchwil a Datblygu yn y dyfodol
- Work with and support organisations to determine and shape their future R&D&I plans

Cyd-fuddsoddwr Co-Investor

- Annog sefydliadau i wireddu eu cynlluniau Ymchwil a Datblygu ac Arloesi trwy rannu'r risgiau ariannol
- Encourage organisations to realise their R&D&I plans by sharing the financial risks

Mae SMART FIS yn gynllun unigryw gan Lywodraeth Cymru gyda'r nod unigol o helpu sefydliadau Cymru i gyflawni "Rhagoriaeth Arloesedd".

Beth mae hynny'n ei olygu?

- Ymchwil, datblygu a manteisio ar arloesi newydd.
- Arloesi gyda cynnyrch, prosesau a gwasanaethau.
- Gwreiddio diwylliant o sgiliau, twf, manteision i ddinasyddion

SMART FIS is a unique Welsh Government Scheme with the single aim of helping Welsh organisations achieve “Innovation Excellence”.

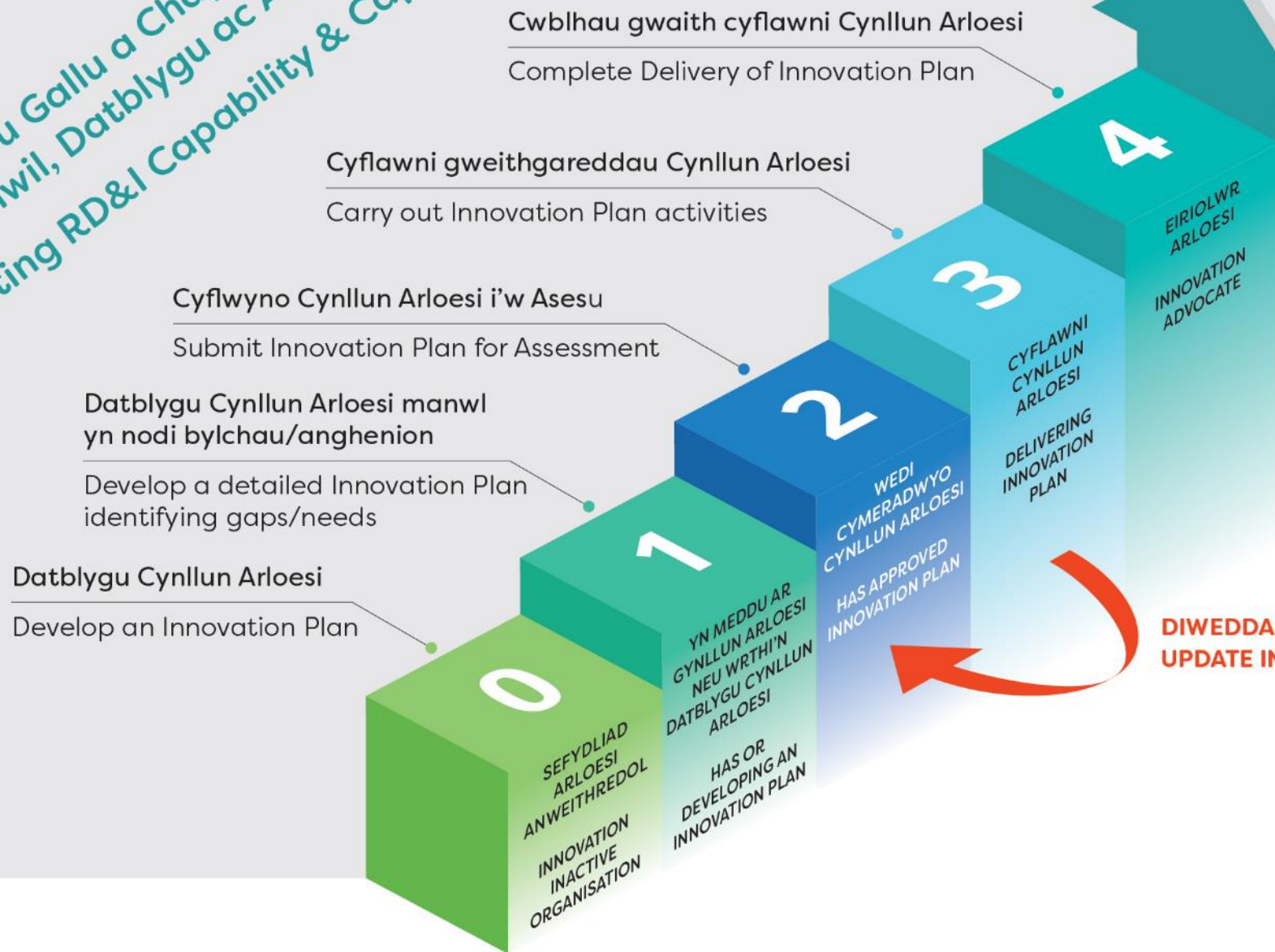
What does that mean?

- Research, development and exploitation new innovation.
- Product, process and service innovation.
- Embedded culture of skills, growth, citizen benefit.



C E F N O G A E T H
A R L O E S E D D H Y B L Y G
F L E X I B L E
I N N O V A T I O N S U P P O R T

**Creu Gallu a Chapasiti
Ymchwil, Datblygu ac Arloesi
Creating RD&I Capability & Capacity**



Twf Cynaliadwy

Cynnydd mewn Buddsoddiad mewn Ymchwil, Datblygu ac Arloesi – wedi'i sicrhau o ffynonellau cyllid eraill e.e. IUK, Banc Datblygu Cymru

Sustainable Growth

Increased Investment in RD&I – secure from other sources of Funding e.g. IUK, DBW

**DIWEDDARU'R CYNLLUN ARLOESI
UPDATE INNOVATION PLAN**



SUT MAE'N GWEITHIO?
HOW DOES IT WORK?

1

Cysylltwch â ni yn

03000 6 03000

businesswales.gov.wales/innovation

Contact us at

03000 6 03000

businesswales.gov.wales/innovation

2

Bydd yr arbenigwr cywir yn y tîm yn adolygu eich cais ac yn cysylltu

The right specialist in the team will review your ask and get in touch

3

Byddant yn gweithio gyda chi i ddatblygu Cynllun Arloesi neu gynneg – yn dibynnu ar natur eich prosiect

They'll work with you to develop an Innovation Plan or proposal – depending on the nature of your project

4

Rydych yn adolygu, diwygio, cytuno ac yn cyflwyno i'w gymeradwyo

You review, amend, agree and submit for approval

- Cyflwynir gan dîm o arbenigwyr – peirianeg, gwyddoniaeth, diwydiant ac eiddo deallusol
- Mynediad i rwydweithiau a chyfleoedd ariannu ledled y DU
- Cymorth ariannol – grant a chaffael (sector cyhoeddus)
- Ariannu gweithgareddau ar y cyd
- Ymgynghoriaeth arbenigol
- Cydweithio

- Delivered by a team of specialists – engineering, science, industry and intellectual property
- Access to UK wide networks and funding opportunities
- Financial support – grant and procurement (public sector)
- Co-fund activities
- Specialist consultancy
- Collaboration



C E F N O G A E T H
A R L O E S E D D H Y B L Y G
F L E X I B L E
I N N O V A T I O N S U P P O R T

Pa wybodaeth sydd ei hangen arnom?

- Nodau/effaith arloesi tymor byr, canolig a hir.
- Gweithgareddau Arloesi sy'n gysylltiedig â gweithgareddau cynnyrch, prosesau, trefniadaeth a datgarboneiddio/economi gylchol.
- Bylchau mewn gallu a chapasiti.
- Partneriaid perthnasol mewn prosiect cydweithredol – risg /gwobr a rennir.

What information do we need?

- Short, medium and long term innovation goals/impact.
- Innovation Activities related to product, process, organisation and decarbonisation/circular economy activities.
- Gaps in capability and capacity.
- Relevant partners in collaborative project – shared risk/reward.



C E F N O G A E T H
A R L O E S E D D H Y B L Y G
F L E X I B L E
I N N O V A T I O N S U P P O R T

Pwy gaiff ddefnyddio'r cymorth?

- Busnesau o unrhyw faint
- Sefydliadau Ymchwil
- Sefydliadau Academaidd
- Sefydliadau'r Trydydd Sector
- Awdurdodau Lleol
- Byrddau Iechyd

Who can access the support?

- Businesses of any size
- Research Organisations
- Academic Institutions
- Third Sector Organisations
- Local Authorities
- Health Boards



C E F N O G A E T H
A R L O E S E D D H Y B L Y G
F L E X I B L E
I N N O V A T I O N S U P P O R T

Faint sydd ar gael?

- Dibynnu ar y sefydliad a math o brosiect
- Enghraifft ar gyfer busnesau:
 - Enghraifft o gyllid o £100 mil y flwyddyn am 2 flynedd
 - Cyfradd ymyrraeth – 50%

How much is available?

- Dependent on organisation and type of project.
- An example for businesses:
 - Typical value of funding £100k per year for 2 years
 - Intervention rate – 50%

*Noder: Mewn achosion eithriadol gellid cynyddu'r gwerthoedd hyn
Note: In exceptional cases these values may be increased*



C E F N O G A E T H
A R L O E S E D D H Y B L Y G
F L E X I B L E
I N N O V A T I O N S U P P O R T

What's the criteria?

Our assessment focuses on three key areas;

We aim to make a decision within 20 working days, dependent on size and complexity of the Innovation Plan.

Start your innovation journey – get in touch today!

Lefel yr arloesi a'r
Manteision i'r
Sefydliad neu
Gydweithrediad

Level of Innovation
and Benefits to the
Organisation or
Collaboration

Manteision i
Gymru

Benefits to
Wales

Hyfywedd /
Tebygolrwydd o
Lwyddiant

Viability/
Likelihood of
success

Beth yw'r meini prawf?

Mae ein hasesiad yn canolbwyntio ar 3 faes allweddol;

Rydym yn anelu at wneud penderfyniad o fewn 20 diwrnod gwaith, gan ddibynnu ar pa mor fawr a chymhleth yw'r Cynllun Arloesi

Dechreuwch eich taith arloesi – cysylltwch â ni heddiw!

CYLLID YR ECONOMI
GYLCHOL

CIRCULAR ECONOMY
FUNDING





- Yn cyd-fynd â'r Strategaeth Arloesi, mae Cronfeydd yr Economi Gylchol ar gael i sefydliadau trwy eu gweithgareddau arloesi arfaethedig
- Bydd gweithgareddau yr Economi Gylchol yn cael eu cefnogi drwy'r Gronfa Economi Gylchol a bydd unrhyw weithgareddau arloesi am ddim yn cael eu cefnogi drwy'r Gefnogaeth Arloesedd Hyblyg SMART

- Aligned with the Innovation Strategy, Circular Economy Funds are available to organisations through their planned innovation activities
- Circular Economy activities will be supported via the Circular Economy Fund and any complimentary innovation activities will be supported via the SMART Flexible Innovation Support

C Y L L I D Y R
E C O N O M I G Y L C H O L
C I R C U L A R
E C O N O M Y F U N D I N G



Yn cefnogi tri maes o weithgarwch

- Ymchwil, Datblygu ac Arloesi yr Economi Gylchol
- Pontio i Economi Gylchol ac/neu
- Datblygu i economi gylchol

Engbrefftau o weithgareddau y gellid eu cefnogi

- Gweithgareddau Ymchwil a Datblygu
- Gweithgareddau Ymchwil a Datblygu cydweithredol dan arweiniad y diwydiant
- Buddsoddi mewn offer cyfalaf

Supports three areas of activity

- Circular Economy Research, Development and Innovation
- Transitioning to a Circular Economy and/or
- Up scaling to a Circular Economy

Examples of supportable activities

- Research & Development (R&D) activities
- Industry led collaborative R&D activities
- Investment in capital equipment

C Y L L I D Y R
E C O N O M I G Y L C H O L
C I R C U L A R
E C O N O M Y F U N D I N G



C Y L L I D Y R
E C O N O M I G Y L C H O L
C I R C U L A R
E C O N O M Y F U N D I N G

Pwy gaiff ddefnyddio'r cymorth?

- Busnesau o unrhyw faint
- Sefydliadau Ymchwil
- Sefydliadau'r Trydydd Sector
- Byrddau Iechyd

Faint sydd ar gael?

- Dibynnu ar y sefydliad a math o brosiect
- Enghraifft ar gyfer busnesau:
 - Enghraifft o gyllid o £200 mil y flwyddyn am 2 flynedd
 - Cyfradd Ymyrraeth – 50%

Who can access the support?

- Businesses of any size
- Research organisations
- Third Sector organisations
- Health Boards

How much is available?

- Dependent on organisation and type of project
- An example for businesses:
 - Typical value of funding £200k per year for 2 years
 - Intervention rate – 50%



Pa wybodaeth sydd ei angen arnom?

- Nodau/effaith arloesi tymor byr, canolig a hirdymor
- Gweithgareddau yr economi gylchol yn gysylltiedig ag arloesi gyda chynnyrch, prosesau a threfniadaeth
- Bylchau mewn gallu a chapasiti
- Partneriaid perthnasol mewn prosiect cydweithredol – risg/gwobr a rennir

What information do we need?

- Short, medium and long-term innovation goals/impact
- Circular economy activities related to product, process, and organisation innovation
- Gaps in capability and capacity
- Relevant partners in collaborative project – shared risk/reward

C Y L L I D Y R
E C O N O M I G Y L C H O L
C I R C U L A R
E C O N O M Y F U N D I N G

Beth sydd angen ei gyflawni?

Bydd angen i brosiectau ddangos eu bod yn gallu cyflawni un neu fwy o'r canlyniadau canlynol:

- ✓ Mwy o ddeunyddiau wedi'u hailgylchu, eu hailddefnyddio a'u hailgynhyrchu yn cael eu defnyddio mewn cynnyrch neu brosesau newydd neu bresennol
- ✓ Lleihau allyriadau CO2
- ✓ Lleihau gwastraff
- ✓ Gwell cynhyrchiant
- ✓ Datblygu a/neu gyflwyno cynhyrchion neu brosesau newydd neu gwell
- ✓ Cael safon BSI/marc barcod perthnasol cydnabyddedig

C Y L L I D Y R
E C O N O M I G Y L C H O L

What needs to be achieved?

Projects will need to demonstrate that they can deliver one or more of the following outcomes:

- ✓ Increased amount of recycled, re-used and re-manufactured materials used in new or existing products or processes
- ✓ Reduce CO2 emissions
- ✓ Reduce waste
- ✓ Improved productivity
- ✓ New or improved products or processes developed and/or introduced
- ✓ Obtain a recognised relevant BSI standard/kitemark

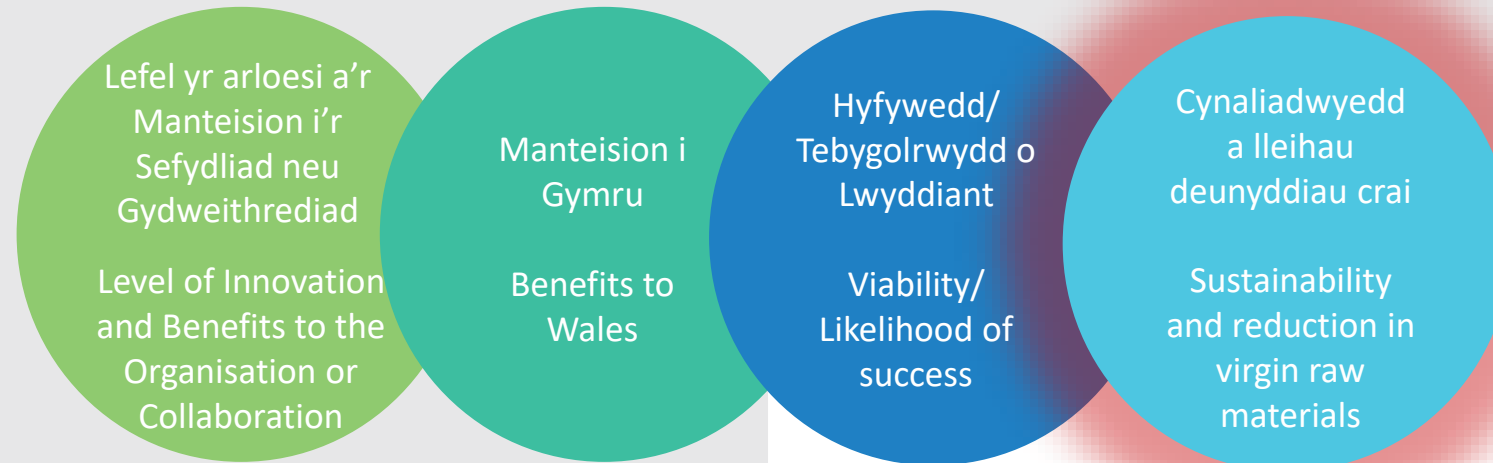
C I R C U L A R
E C O N O M Y F U N D I N G

C Y L L I D Y R
E C O N O M I G Y L C H O L

What's the criteria?

An additional key area is included for this fund;

We aim to make a decision within 20 working days, dependent on size and complexity of the Innovation Plan.



Beth yw'r meini prawf?

Mae maes allweddol ychwanegol wedi'i gynnwys yn y gronfa hon;

Rydym yn anelu at wneud penderfyniad o fewn 20 diwrnod gwaith, gan ddibynnu ar faint a chymhlethdod y Cynllun Arloesi.

C I R C U L A R
E C O N O M Y F U N D I N G

Busnes | Business
Cymru | Wales

D I O L C H
T H A N K Y O U

03000 6 03000

busnescymru.llyw.cymru/arloesedd
businesswales.gov.wales/innovation



Llywodraeth Cymru
Welsh Government